

MINUTES

JOINT MEETING FINANCE AND CONSTRUCTION COMMITTEES

UNIVERSITY OF SOUTHERN INDIANA BOARD OF TRUSTEES

September 9, 1999

The University of Southern Indiana Finance Committee and Construction Committee met in a joint session on Thursday, September 9, 1999, at 12:30 p.m. in the Conference Center of the University Center. Present were Trustees Tina Kern, Thomas McKenna, G. Patrick Hoehn, and James Will Sr. Also attending were Vice President for Business Affairs Richard Schmidt; Assistant Vice President for Business Affairs Cindy Brinker; Business Office Director Mike Whipple; and Facilities Operations, and Planning Director Steve Helfrich.

There being a quorum present, Ms. Kern called the meeting to order at 12:30 p.m.

(FINANCE COMMITTEE)

1. APPROVAL OF RESOLUTION APPROVING AND AUTHORIZING THE SALE OF STUDENT FEE BONDS TO FINANCE THE WELLNESS, FITNESS, RECREATIONAL FACILITY

On a motion by Mr. McKenna, seconded by Mr. Hoehn, the Resolution of the Finance Committee for the University of Southern Indiana Approving and Authorizing the Sale of the University of Southern Indiana Student Fee Bonds, Series G (Attachment A) was approved.

2. REVIEW OF BANK ACCOUNTS - DEMAND DEPOSIT

Richard Schmidt reviewed a summary of University bank account balances.

3. APPROVAL OF BUDGET APPROPRIATIONS, ADJUSTMENTS, AND TRANSFERS FOR FISCAL YEAR 1999-2000 (Attachment B)

On a motion by Mr. McKenna, seconded by Mr. Hoehn, the Budget Appropriations, Adjustments, and Transfers for Fiscal Year 1999-2000 were approved.

4. APPROVAL OF BUDGET APPROPRIATIONS, ADJUSTMENTS, AND TRANSFERS FOR FISCAL YEAR 1998-99 (Attachment C)

On a motion by Mr. Hoehn, seconded by Mr. McKenna, the Budget Appropriations, Adjustments, and Transfers for Fiscal Year 1998-1999 were approved.

(CONSTRUCTION COMMITTEE)

5. REVIEW OF RESPONSES TO THE REQUEST FOR PROPOSAL (RFP) FOR CONSTRUCTION MANAGEMENT SERVICES FOR THE SCIENCE/EDUCATION CLASSROOM BUILDING

The RFP and summary of the responses (Attachments D and E) were reviewed. Copies of the complete documents were available for review at the meeting on September 9. After discussion, the committee recommended that The Skillman Corporation and, alternately, Construction Control Inc. be contacted. The committee will meet via conference call if necessary. Copies of Attachments D and E are filed with the official Board of Trustees minutes.

**6. REVIEW OF RESPONSES TO THE REQUEST FOR STATEMENT OF QUALIFICATIONS (RFQ)
FROM FIRMS INTERESTED IN PROVIDING PROFESSIONAL ARCHITECTURAL AND
ENGINEERING SERVICES FOR THE DESIGN AND CONSTRUCTION OF THE
SCIENCE/EDUCATION CLASSROOM BUILDING**

The RFQ and summary of the responses (Attachments F and G) were reviewed. Copies of the complete documents were available for review at the meeting on September 9. After discussion, the committee recommended the pool be narrowed to five or six prospects for interview. Copies of Attachments F and G are filed with the official Board of Trustees minutes.

There being no further business, the meeting was adjourned at 1:53 p.m.

RESOLUTION OF THE FINANCE COMMITTEE OF THE BOARD OF TRUSTEES FOR THE UNIVERSITY OF SOUTHERN INDIANA APPROVING AND AUTHORIZING THE SALE OF THE UNIVERSITY OF SOUTHERN INDIANA STUDENT FEE BONDS, SERIES G (ADJUSTABLE DEMAND)

WHEREAS, the Board of Trustees (the "Board") of the University of Southern Indiana (the "University") has full power and authority under and by virtue of the laws of the State of Indiana, including, more particularly, the provisions of Indiana Code 20-12-6, to issue bonds secured by student fees to finance a Wellness, Fitness, Recreational Facility on its Evansville campus, as well as related site preparation and other improvements and renovations (the "Project"); and

WHEREAS, the Board has authorized the Finance Committee to approve a financing plan for the project; and

WHEREAS, the University has heretofore executed and delivered to The Merchants National Bank of Terre Haute, as succeeded by Old National Trust Company, as trustee (the "Trustee"), a certain Trust Indenture dated as of November 1, 1985 (the "Indenture"), for the purpose of securing its Student Fee Bonds issued from time to time thereunder; and

WHEREAS, Article IV of the Indenture authorizes the issuance of additional series of bonds by the University and the authentication and delivery of those additional series of bonds by the Trustee under the conditions set forth in Article IV, which conditions have been complied with so as to authorize the issuance, authentication and delivery of an additional series of bonds by the Trustee under the conditions set forth in Article IV, to provide the funds required to finance the construction and equipping of the Project; and

WHEREAS, the Finance Committee has full authority to take all necessary actions in connection with the financing of the Project through the issuance of an additional series of bonds, and to approve and authorize the appropriate officers of the Board and the University to execute and deliver, for and on behalf of the University, such instruments as may be determined by such officers to be appropriate and necessary to carry out the financing of the Project through the issuance of an additional series of bonds; and

WHEREAS, the Finance Committee desires to authorize the execution and delivery of the University of Southern Indiana Student Fee Bonds, Series G (Adjustable Demand) (the "Bonds"), and of a Fifth Supplemental Indenture, an Official Statement, a Bond Purchase Agreement, a Construction and Rebate Agreement, a Reimbursement Agreement, a Pledge and Security Agreement and a Remarketing Agreement, and forms of the Bonds; and

WHEREAS, there has now been submitted to the Finance Committee a form of Fifth Supplemental Indenture (the "Fifth Supplemental Indenture"), a form of Official Statement (the

"Official Statement"), a form of Bond Purchase Agreement (the "Bond Purchase Agreement"), a form of Construction and Rebate Agreement (the "Construction and Rebate Agreement"), a form of Reimbursement Agreement (the "Reimbursement Agreement"), a form of Pledge and Security Agreement (the "Pledge and Security Agreement") and a form of Remarketing Agreement (the "Remarketing Agreement") in connection with the issuance of the Bonds in an aggregate principal amount not to exceed \$4,200,000, plus certain additional costs and discounts and funding requirements, which financing has been approved by the State Budget Agency of the State of Indiana;

NOW, THEREFORE, BE IT RESOLVED by the Finance Committee as follows:

Section 1. The issuance of the Bonds by the University on the terms and conditions set forth in the Fifth Supplemental Indenture is hereby authorized in the total principal amount not to exceed the sum of \$4,200,000, plus underwriter's discount, as described below, original issue discount (if any), as permitted by law, costs of issuance and costs of credit enhancement. The Bonds shall be designated "University of Southern Indiana Student Fee Bonds, Series G (Adjustable Demand)". The Bonds shall be sold at an interest rate or rates approved by the Chair, Vice Chair or Treasurer of the University, which interest rate or rates shall be the Weekly Rate, Adjustable Rate or Fixed Rate, and which shall not exceed the Maximum Rate, all as established pursuant to the Fifth Supplemental Indenture. The final maturity of the Bonds shall not extend beyond October 1, 2019, with such redemption features as the executing officers shall approve. The Bonds shall be sold pursuant to the Bond Purchase Agreement at negotiated sale to Banc One Capital Markets, Inc., as the underwriter listed in the Bond Purchase Agreement.

Section 2. The Fifth Supplemental Indenture is approved in substantially the form submitted to the Finance Committee and is made a part of this Resolution as if fully set forth herein. The Chair or Vice Chair of the University, or either of them, is hereby authorized to execute and deliver, and the Secretary or Assistant Secretary of the University, or either of them, is hereby authorized to attest the signature of and to imprint the corporate seal of the University on the Fifth Supplemental Indenture in substantially the form presented to this meeting, with those changes in form or substance that the officers executing that document shall approve, such approval to be conclusively evidenced by the execution and delivery thereof.

Section 3. The Official Statement is approved in substantially the form submitted to the Finance Committee and is made a part of this Resolution as if fully set forth herein. The Treasurer of the University is hereby authorized and directed to make those changes in form or substance as are necessary or appropriate, to authorize the distribution of the Official Statement, to deem an Official Statement to be final for purposes of applicable Securities and Exchange Commission rules, to execute and deliver the form of any final Official Statement with those changes in form or substance that the Treasurer shall approve, and to cause printed copies of the Official Statement to be provided to those prospective purchasers, investors and other persons as he may deem advisable in order to market the Bonds, and any such prior actions are hereby ratified and confirmed.

Section 4. The Bond Purchase Agreement is approved in substantially the form submitted to the Finance Committee and is made a part of this Resolution as if set forth fully herein. The Chair, Vice Chair or Treasurer of the University, or any of them, is hereby authorized to execute and deliver the Bond Purchase Agreement in substantially the form submitted to the Finance Committee, with those changes in form or substance that the officers executing that document shall approve, such approval to be conclusively evidenced by the execution and delivery thereof.

Section 5. The Construction and Rebate Agreement is approved in substantially the form submitted to the Finance Committee and is made a part of this Resolution as if set forth fully herein. The Chair, Vice Chair or Treasurer of the University, or any of them, is hereby authorized to execute and deliver and the Secretary or Assistant Secretary of the University, or either of them, is hereby authorized to attest the signature of and to imprint the corporate seal of the University on the Construction and Rebate Agreement in substantially the form submitted to the Finance Committee, with those changes in form or substance that the officers executing that document shall approve, such approval to be conclusively evidenced by the execution and delivery thereof.

Section 6. The Reimbursement Agreement is approved in substantially the form submitted to the Finance Committee and is made a part of this Resolution as if set forth fully herein. The Chair, Vice Chair or Treasurer of the University, or any of them, is hereby authorized to execute and deliver the Reimbursement Agreement in substantially the form presented to the Finance Committee, with those changes in form or substance that the officers executing that document shall approve, such approval to be conclusively evidenced by the execution and delivery thereof.

Section 7. The Pledge and Security Agreement is approved in substantially the form submitted to the Finance Committee and is made a part of this Resolution as if set forth fully herein. The Chair, Vice Chair or Treasurer of the University, or any of them, is hereby authorized to execute and deliver the Pledge and Security Agreement in substantially the form presented to the Finance Committee, with those changes in form or substance that the officers executing that document shall approve, such approval to be conclusively evidenced by the execution and delivery thereof.

Section 8. The Remarketing Agreement is approved in substantially the form submitted to the Finance Committee and is made a part of this Resolution as if set forth fully herein. The Chair, Vice Chair or Treasurer of the University, or any of them, is hereby authorized to execute and deliver the Remarketing Agreement in substantially the form presented to the Finance Committee, with those changes in form or substance that the officers executing that document shall approve, such approval to be conclusively evidenced by the execution and delivery thereof.

Section 9. The Letter of Credit to be issued pursuant to the Reimbursement Agreement is approved in substantially the form submitted to the Finance Committee, with those changes in form or substance that the Chair, Vice Chair or Treasurer of the University shall approve, and is made a part of this Resolution as if set forth fully herein.

Section 10. The Treasurer of the University is hereby authorized to prepare the bond forms, as approved by the Finance Committee, required for use in the issuance of the Bonds, and to cause the same to be executed manually or by facsimile by the proper officers of the University as provided in the Fifth Supplemental Indenture and the Indenture. Upon execution of the Bonds, the Treasurer shall deliver the Bonds to the Trustee for authentication, and upon their authentication, the Treasurer is authorized and directed to deliver the Bonds, upon payment of the purchase price, to The Depository Trust Company, New York, New York ("DTC"), on behalf of the purchaser thereof, which purchase price shall reflect the underwriter's discount permitted by this Resolution and original issue discount, if any, as permitted by law.

Section 11. The Chair, Vice Chair, Treasurer, Secretary and Assistant Secretary of the University are, and each of them is, hereby authorized and directed to do any and all further acts and things necessary underlying execution and delivery of such additional or supporting agreements, documents or certificates (including any supplement to the Blanket Issuer Letter of Representations and any agreement associated with obtaining credit enhancement) as may be requested or necessary in order to complete the transaction contemplated by the Bond Purchase Agreement, the Fifth Supplemental Indenture, the Construction and Rebate Agreement, the Reimbursement Agreement, the Pledge and Security Agreement, the Remarketing Agreement and the Official Statement hereby authorized.

Dated: September 9, 1999

BUDGET APPROPRIATIONS, ADJUSTMENTS, AND TRANSFERS FOR FISCAL YEAR 1999-2000

Additional Appropriation - Income

From:	Unappropriated Auxiliary Funds		
To:	3-30910	New Harmony Gallery Personal Services	400
From:	Unappropriated Restricted Funds		
To:	4-45080	Indiana Council for Economic Education - Economic Education 1999-2000 Supplies and Expense	17,850
To:	4-45090	IU School of Medicine - Evansville Center for Medical Education Personal Services Supplies and Expense	320,303 264,157
To:	4-45091	IU School of Medicine - Medical Education Special Needs Supplies and Expense	114
To:	4-46010	IU School of Medicine - Student Fee Technology Plan Supplies and Expense	6,100
To:	4-46259	Indiana Humanities Council – GERMANY IN US Southwest Indiana Supplies and Expense	2,000
To:	4-46261	Arts Council of Southwestern Indiana – New Harmony Gallery Supplies and Expense	11,800
To:	4-46262	Arts Council of Southwestern Indiana – New Harmony Theatre Supplies and Expense	9,785
To:	4-46263	Arts Council of Southwestern Indiana - Ropewalk Supplies and Expense	5,470
To:	4-46264	Arts Council of Southwestern Indiana - Southern Indiana Review Supplies and Expense	1,727
To:	4-46410	U.S. Department of Health and Human Services - Professional Nurse Traineeship Supplies and Expense	31,369
To:	4-46420	U.S. Department of Health and Human Services - Acute Care Nurse Practitioner Personal Services Supplies and Expense	192,064 60,897
To:	4-46425	U.S. Department of Health and Human Services - Family Nurse Practitioner Personal Services Supplies and Expense	192,064 60,897
To:	4-46704	Indiana Commission for Higher Education/Ivy Tech - Perkins Options Program Personal Services Supplies and Expenses	6,690 36,015
To:	4-46910	Purdue University - Indiana Campus Sexual Assault Project Supplies and Expense	2,000

To:	4-46911	Purdue University - Rape Aggression Defense Program Supplies and Expense	1,787
To:	4-47800	Lilly Endowment Retention Initiative - Data Gathering and Evaluation Personal Services	37,132
To:	4-47805	Lilly Endowment Retention Initiative - In-service Staff Development Personal Services Supplies and Expense	1,000 600
To:	4-47810	Lilly Endowment Retention Initiative - Telephone Assisted Registration/ Automated Access to Student Records Supplies and Expense	2,000
To:	4-47815	Lilly Endowment Retention Initiative - Degree Audit Reporting System Personal Services Supplies and Expense	31,827 725
To:	4-47820	Lilly Endowment Retention Initiative - Improving Advising Effectiveness Personal Services Supplies and Expense	7,539 4,550
To:	4-47825	Lilly Endowment Retention Initiative - Academic Support in Housing Personal Services Supplies and Expense	39,945 12,575
To:	4-47830	Lilly Endowment Retention Initiative - Fostering Community Supplies and Expense	18,700
To:	4-47835	Lilly Endowment Retention Initiative - Supplemental Instruction Personal Services Supplies and Expense	17,332 100
To:	4-47840	Lilly Endowment Retention Initiative - First Year Initiatives Personal Services Supplies and Expense	26,439 13,410
To:	4-47845	Lilly Endowment Retention Initiative - Cycle of Institutional Studies Supplies and Expense	8,100
To:	4-47850	Lilly Endowment Retention Initiative - Center for Teaching and Learning Excellence Personal Services Supplies and Expense	11,489 30,000

Additional Appropriation – Reserve Funds

From: Unappropriated Current Operating Funds

To:	1-10210	Art Department Supplies & Expense	918
To:	1-10340	Chemistry Department Supplies & Expense	4,077
To:	1-13200	Library Capital Outlay	8,428

BUDGET APPROPRIATIONS, ADJUSTMENTS, AND TRANSFERS FOR FISCAL YEAR 1998-99

1. Additional Appropriation - Income

From:	Unappropriated Current Operating Funds		
To:	1-10100	General Instruction Supplies and Expense	1,138
To:	1-10160	Indiana Arts Commission - Music Supplies and Expense	53,748
To:	1-10170	USI Theatre Supplies and Expense	1,633
To:	1-10190	WSWI Supplies and Expense	8,690
To:	1-10195	Southern Indiana Review Supplies and Expense	665
To:	1-10200	School of Liberal Arts Supplies and Expense	158
To:	1-10210	Art and Music Personal Services	41
To:	1-10240	Foreign Language Personal Services	1,000
To:	1-10300	Pott School of Science and Engineering Technology Capital Outlay Personal Services	8,115 3,600
To:	1-10320	Engineering Technology Supplies and Expense	2,573
To:	1-10450	Dental Clinic Supplies and Expense	132
To:	1-10700	School of Business Supplies and Expense	668
To:	1-10740	Information Systems and Business Education Supplies and Expense	2,020
To:	1-10820	Social Work Supplies and Expense	63
To:	1-10940	Distance Education Supplies and Expense	41,275
To:	1-13100	Media Services Supplies and Expense	8,704
To:	1-14101	Intramurals Supplies and Expense	4,638

To:	1-15000	Physical Plant Supplies and Expense	262,033
To:	1-15600	Distribution Services Supplies and Expense	4,409
To:	1-16200	President's Office Personal Services	150
To:	1-16230	News and Information Services Supplies and Expense	2,923
To:	1-16301	Duplicating Services Supplies and Expense	223,417
To:	1-16302	Copy Center Services Supplies and Expense	336,618
To:	1-16303	Graphic Design Services Supplies and Expense	16,401
To:	1-16304	Prepress and Bindery Services Supplies and Expense	14,525
From:	Unappropriated Designated Funds		
To:	2-20000	Student Service Fee Supplies and Expense	16,955
To:	2-20120	Multicultural Center Supplies and Expense	2,223
To:	2-20140	Student Leadership Academy Supplies and Expense	3,536
To:	2-20300	Student Government Association Supplies and Expense	1,054
To:	2-20500	The Shield Supplies and Expense	4,737
To:	2-21000	Instructional Facilities Fee Supplies and Expense	787,393
To:	2-21050	Parking Fee Income Supplies and Expense	17,442
To:	2-21100	Campus Services Fee Supplies and Expense	11,079
To:	2-22000	Extended Services Revolving Fund Supplies and Expense	68,667
To:	2-22250	Saturday School Supplies and Expense	28,419
To:	2-22350	Extended Services Organizational/Professional Development Supplies and Expense	36,034

To:	2-22500	Corporate Training Program Supplies and Expense	18,555
To:	2-22800	Ropewalk Writers Retreat Supplies and Expense	22,688
To:	2-23100	Faculty Development Travel Supplies and Expense	16,519
To:	2-23200	Occupational Therapy Professional Practice Unit Supplies and Expense	351
To:	2-23210	Nursing and Health Professions Professional Practice Unit Supplies and Expense	45,367
To:	2-23220	Anticoagulation Practice Unit Supplies and Expense	14,468
To:	2-23230	Dental Professional Practice Unit Supplies and Expense	3,494
To:	2-23300	School of Business Revolving Fund Supplies and Expense	4,723
To:	2-23305	Center for Business and Economic Research Supplies and Expense	19,072
To:	2-24200	Computer Maintenance Fund Supplies and Expense	6,832
To:	2-24600	Employee Benefits Revolving Fund Supplies and Expense	26,164
From:	Unappropriated Auxiliary Funds		
To:	3-30200	University Center Supplies and Expense	5,586
To:	3-30205	University Special Events Supplies and Expense	6,787
To:	3-30215	University Drink Vending Supplies and Expense	132
To:	3-30300	University Licensing Supplies and Expense	4,005
To:	3-30500	University Bookstore Supplies and Expense	18,396
To:	3-30510	University Bookstore - New Books Supplies and Expense	125,695
To:	3-30520	University Bookstore - Used Books Supplies and Expense	162,361
To:	3-30530	University Bookstore - Supplies Supplies and Expense	41,436

To:	3-30540	University Bookstore - Wholesale Books Supplies and Expense	27,355
To:	3-30550	University Bookstore - Sundries Supplies and Expense	30,232
To:	3-30570	Bookstore - Fitness Center Sales Supplies and Expense	116
To:	3-30600	Athletics Operations Supplies and Expense	4,920
To:	3-30601	Athletics Revenue Supplies and Expense	38,692
To:	3-30602	Baseball Supplies and Expense	31,575
To:	3-30603	Men's Tennis Supplies and Expense	4,241
To:	3-30604	Women's Tennis Supplies and Expense	376
To:	3-30605	Women's Basketball Supplies and Expense	5,257
To:	3-30606	Men's Basketball Supplies and Expense	4,149
To:	3-30607	Softball Supplies and Expense	7,970
To:	3-30608	Men's Golf Supplies and Expense	2,675
To:	3-30609	Men's Cross Country Supplies and Expense	5,983
To:	3-30610	Men's Soccer Supplies and Expense	731
To:	3-30611	Volleyball Supplies and Expense	861
To:	3-30615	Women's Cross Country Supplies and Expense	296
To:	3-30620	Soccer - Women Supplies and Expense	251
To:	3-30698	Athletics Reserve Supplies and Expense	10,656
To:	3-30700	Athletics Grant-in-Aid Supplies and Expense	2,727
To:	3-30702	Baseball Grant-in-Aid Supplies and Expense	6,315

To:	3-30703	Men's Tennis Grant-in-Aid Supplies and Expense	2,099
To:	3-30706	Men's Basketball Grant-in-Aid Supplies and Expense	5,301
To:	3-30707	Softball Grant-in-Aid Supplies and Expense	2,209
To:	3-30708	Men's Golf Grant-in-Aid Supplies and Expense	1,800
To:	3-30709	Men's Cross Country Grant-in-Aid Supplies and Expense	7,403
To:	3-30713	Sports Medicine Grant-in-Aid Supplies and Expense	823
To:	3-32100	Lincoln Amphitheatre Gift Shop Supplies and Expense	12,175
To:	3-30800	Children's Center Supplies and Expense	15,556
To:	3-30900	New Harmony Operations Supplies and Expense	6,039
To:	3-30912	New Harmony Gallery Framing Supplies and Expense	5,903
To:	3-30920	New Harmony Tours Supplies and Expense	13,071
To:	3-30940	New Harmony Guest House Supplies and Expense	2,769
To:	3-33000	Residence Life Operations Supplies and Expense Repairs and Maintenance	38,563 6,400
To:	3-33100	McDonald Apartments General Supplies and Expense	146,706
To:	3-33160	McDonald Apartments II Supplies and Expense	235,219
To:	3-33170	McDonald Apartments III Supplies and Expense	159,192
To:	3-33200	McDonald Apartments Damages Supplies and Expense	6,673
To:	3-33500	O'Daniel Apartments General Supplies and Expense	139,876
To:	3-33750	O'Daniel Apartments Damages Supplies and Expense	8,847

To:	3-33800	O'Daniel Apatments - Resident Assistants Supplies and Expense	30,773
To:	3-34500	Miscellaneous Furnishings Supplies and Expense	6,418
From:	Unappropriated Restricted Funds		
To:	4-45090	IU School of Medicine - Evansville Center for Medical Education Supplies and Expense	133,922
To:	4-46144	Sandia National Laboratories - Disaster Resistant Communities Personal Services Supplies and Expense	19,500 6,300
To:	4-46265	Indiana Humanities Council – GERMANY IN US Southwest Indiana Supplies and Expense	5,000
To:	4-46353	Torrington Biology Research Lab Supplies and Expense	63,240

2. Additional Appropriation - Reserve Funds

From:	Unappropriated Current Operating Funds		
To:	1-10105	Academic Computer Labs Personal Services	30,093
To:	1-10160	Arts Commission - Music Supplies and Expense	2,381
To:	1-10170	USI Theatre Supplies and Expense	3,125
To:	1-10185	Videotaping Services Supplies and Expense	402
To:	1-10190	WSWI Capital Outlay	14,673
To:	1-10195	Southern Indiana Review Supplies and Expense	259
To:	1-10200	School of Liberal Arts Capital Outlay	50,000
To:	1-13210	Library Technology Personal Services	58,954
To:	1-15000	Physical Plant Repairs and Maintenance Capital Outlay	10,398 116,623
To:	1-15001	Recreation Field Capital Purchases Capital Outlay	32,768
To:	1-16300	Publications Capital Outlay	89,729

To:	1-16303	Graphic Design Services Capital Outlay	6,000
To:	1-16500	Computer Center Supplies and Expense	10,953

3. Additional Appropriation - Fund Balance

From: Unappropriated Designated Funds

To:	2-20140	Student Leadership Academy Supplies and Expense	1,497
To:	2-22100	Historic Southern Indiana Revolving Fund Supplies and Expense	1,250
To:	2-22260	English as a Second Language Program Supplies and Expense	10,969
To:	2-22350	Extended Services Organizational/Professional Development Supplies and Expense	34,046
To:	2-24600	Employee Benefits Revolving Fund Supplies and Expense	14,513
To:	2-25000	Faculty Research Supplies and Expense	4,128

From: Unappropriated Auxiliary Funds

To:	3-30210	Campus Card Office (Eagle Access) Supplies and Expense	217,402
To:	3-30430	New Harmony Museum Shop - Media Supplies and Expense	10,023
To:	3-30440	New Harmony Museum Shop - Logo Supplies and Expense	4,585
To:	3-30450	New Harmony Museum Shop - Children's Supplies and Expense	7,330
To:	3-30460	New Harmony Museum Shop - Jewelry Supplies and Expense	5,344

From: Unappropriated Auxiliary Funds

To:	3-30698	Athletics Reserve Supplies and Expense	77,795
To:	3-30700	Athletics Grant-in-Aid Supplies and Expense	15,422
To:	3-30920	New Harmony Tours Supplies and Expense	13,231
To:	3-30930	New Harmony State Sites Supplies and Expense	950

To:	3-32007	Young Abe Lincoln 1997 Personal Services Supplies and Expense	25,604 6
To:	3-32008	Young Abe Lincoln 1998 Supplies and Expense Repairs and Maintenance Capital Outlay	400,465 529 1,125
To:	3-33950	Golden Towers Apartments Supplies and Expense	99,844

4. Transfer and Appropriation of Funds

From:	1-10100	General Instruction	
To:	2-23000	General Instruction Revolving Fund Supplies and Expense	1,025
From:	1-14001	Admissions	
To:	2-20650	Southern Hospitality Days Supplies and Expense	928
From:	1-14007	Student Wellness	
To:	3-36000	Fitness Center Supplies and Expense	3,550
From:	2-20000	Student Services Fee	
To:	3-30200	University Center Supplies and Expense	8,223
From:	2-20050	Student Services Operations	
To:	3-36000	Fitness Center Supplies and Expense	261
From:	2-23210	Nursing and Health Professions Professional Practice Unit	
To:	2-23230	Dental Professional Practice Unit Supplies and Expense	795
From:	3-30200	University Center	
To:	1-10300	Pott School of Science and Engineering Technology Personal Services	35
From:	3-30200	University Center	
To:	1-10410	Nursing Supplies and Expense	400
From:	3-32009	Lincoln Amphitheatre 1999	
To:	3-32007	Lincoln Amphitheatre 1997 Personal Services Supplies and Expense	25,604 6
From:	6-60010	Interest Earned Auxiliary Funds	
To:	3-30940	New Harmony Guest House	1,969
From:	6-60015	Reserve for Auxiliary Facilities	
To:	3-30200	University Center Supplies and Expense	50,000

5. Transfer of Funds

From:	1-10100	General Instruction	
To:	3-30900	New Harmony Operations	26,209
From:	1-10900	Extended Services	
To:	2-22400	TQM Contracts	23,920
From:	1-10900	Extended Services	
To:	2-22200	Extended Services Revolving Fund	6,290
From:	1-10900	Extended Services	
To:	2-22350	Organizational/Professional Development Revolving Fund	51,543
From:	2-20050	Student Services Operations	
To:	3-36000	Fitness Center	1,492
From:	2-20500	The Shield	
To:	2-20400	Student Publications Reserve	9,285
From:	2-20600	Transitions	
To:	2-20400	Student Publications Reserve	5,088
From:	3-30500	Bookstore	
To:	6-60035	Bookstore Reserve	600,000
From:	3-30698	Athletics Reserve	
To:	3-30601	Athletics Revenue	32,992
From:	3-30700	Athletics Grant-in-Aid	
To:	3-30601	Athletics Revenue	50,278
From:	3-33000	Residence Life Operations	
To:	6-60026	McDonald II Reserve	285
From:	3-33100	McDonald General	
To:	6-60005	McDonald Reserve	38,408
From:	3-33160	McDonald II	
To:	3-33200	McDonald Damages	32,828
To:	3-33300	McDonald Resident Assistants	9,061
From:	3-33170	McDonald III	
To:	3-33300	McDonald Resident Assistants	6,122
To:	6-60027	McDonald III Reserve	197,867
From:	3-33500	O'Daniel Apartments General	
To:	6-60025	O'Daniel Reserve	302,996
From:	3-33850	O'Daniel Activity Fee	
To:	3-33400	McDonald Activity Fee	11,369
From:	6-60010	Interest on Auxiliary Funds	
To:	6-60015	Physical Activities Center Multi-Purpose Expansion	1,155
From:	6-60025	O'Daniel Reserve	
To:	3-34500	Miscellaneous Furnishings	177,014

From:	6-60026	McDonald II Reserve	
To:	3-33160	McDonald II	120,304
From:	6-60030	Automobile Amortization	
To:	1-09100	Current Operating	127,021
From:	6-60100	Special Projects	
To:	1-09100	Current Operating	30,975
To:	6-60110	Property Purchase	98,000
To:	6-60127	Physical Activities Center Offices	2,414
To:	6-60150	Children's Center Relocation	6,564
To:	6-60165	Health Professions Center Cage Washer	2,508
To:	6-60250	Campus Signage	6,355

The following attachments will be included in Finance/Construction minutes:

Attachment D

RFP for Construction Management Services
For the Science/Education Classroom Building

Attachment E

Summary of RFP for
Construction Management Services
For the Science/Education Classroom Building

Attachment F

Request for Statement of Qualifications
For the Science/Education Classroom Building

Attachment G

Summary of Statement of Qualifications
For Architectural and Engineering Services

AGENDA
JOINT MEETING
FINANCE AND CONSTRUCTION COMMITTEES

UNIVERSITY OF SOUTHERN INDIANA
BOARD OF TRUSTEES

September 9, 1999

(FINANCE COMMITTEE)

1. **APPROVAL OF RESOLUTION APPROVING AND AUTHORIZING THE SALE OF STUDENT FEE BONDS TO FINANCE THE WELLNESS, FITNESS, RECREATIONAL FACILITY**

Approval of the Resolution of the Finance Committee for the University of Southern Indiana Approving and Authorizing the Sale of the University of Southern Indiana Student Fee Bonds, Series G (Attachment A) is recommended.

2. **APPROVAL OF BUDGET APPROPRIATIONS, ADJUSTMENTS, AND TRANSFERS FOR FISCAL YEAR 1999-2000 (Attachment B)**
3. **APPROVAL OF BUDGET APPROPRIATIONS, ADJUSTMENTS, AND TRANSFERS FOR FISCAL YEAR 1998-99 (Attachment C)**

(CONSTRUCTION COMMITTEE)

4. **REVIEW OF RESPONSES TO THE REQUEST FOR PROPOSAL (RFP) FOR CONSTRUCTION MANAGEMENT SERVICES FOR THE SCIENCE/EDUCATION CLASSROOM BUILDING**

A copy of the RFP and a summary of the responses are attached (Attachments D and E). Copies of the complete documents will be available for review at the meeting on September 9.

5. **REVIEW OF RESPONSES TO THE REQUEST FOR STATEMENT OF QUALIFICATIONS (RFQ) FROM FIRMS INTERESTED IN PROVIDING PROFESSIONAL ARCHITECTURAL AND ENGINEERING SERVICES FOR THE DESIGN AND CONSTRUCTION OF THE SCIENCE/EDUCATION CLASSROOM BUILDING**

A copy of the RFQ and a summary of the responses are attached (Attachments F and G). Copies of the complete documents will be available for review at the meeting on September 9.

3. PHASE II - FEES

The fees quoted below shall include all costs listed in Item 1 above for the period from receipt of bids until one year following Substantial Completion.

Phase II

(a) Fee - Lump Sum \$ _____
(figures)

(words)

OR

Fee based on a percentage of construction costs: _____%

(words)

(b) Staff Cost

Included in the Fixed Fee above is \$ _____ for staff at Direct Personnel Expense (DPE). The Direct Personnel Expense for each proposed staff member is listed below:

Staff Position	Est. Hours	DPE Hourly Rate	Cost
1.			
2.			
3.			
4.			
5.			
6.			
7.			
8.			

- (c.) The following noted project administration and construction management services are included in Phase II fee proposal:

DESCRIPTION OF SERVICE	CHECK APPROPRIATE COLUMN		
	YES	NO	AVAILABLE AT ADDITIONAL COST
Construction Phase:			
Securing of Signed Contracts			
Management of all Insurance Documents			
Conduct Weekly, Bi-Weekly, and Monthly Progress Meetings			
Financial Status Reports			
Full-Time On-Site Staff			
1) Principal-In-Charge			
2) Project Manager			
3) Project Superintendent			
4) Others (Please List):			
Alternate Equipment/Materials Analysis			
Management of Multiple Contractors			
Inspection of All Work			
Approval of Progress Payments			
Project Accounting			
Construction Schedule Adherence			
Management of Change Orders			
Punch List Assistance			
Management of Project Completeness			
Quality Assurance/Quality Control			
Implementation of Safety Audit Program			

DESCRIPTION OF SERVICE	CHECK APPROPRIATE COLUMN		
	YES	NO	AVAILABLE AT ADDITIONAL COST
Others (Please List):			
Occupancy Phase:			
Start-Up Procedures for Systems			
Move-in Assistance			
Organized Maintenance Manuals			
Equipment Information			
Building Problem Resolutions			
Overseeing of Contractor Retainage			
Operations Training			
Final Project Accounting			
One-Year Warranty Inspection			
Expert Witness			
Others (Please List):			

PART C - FEE PROPOSAL (continued)

SIGNATURES AND CERTIFICATION

Under penalty of perjury, the undersigned declares, verifies, and states to the best of his/her knowledge and belief that the foregoing and attached information is true, correct, and complete.

Name of Firm: _____

By _____

Printed _____

Its _____

STATE OF _____

COUNTY OF _____

Before me, the undersigned, a Notary Public in and for said County and State, appeared _____, for and on behalf of said corporation, who verified that the foregoing and attached information is true, correct, and complete.

WITNESS my hand and Notarial Seal this _____ day of _____, 1999.

Notary Public

Printed

My commission expires:

PART D - SUPPLEMENTAL INFORMATION

File Name: A:/rfp7899

SUMMARY OF

Request for Proposal (RFP)

for

Construction Management Services

for the

Science/ Education Classroom Building

at the

**UNIVERSITY OF SOUTHERN INDIANA
EVANSVILLE, INDIANA**

AUGUST 23, 1999

Section 1: Firm Background

- 1.01 Firm name, address and telephone number
- 1.02 Two contact persons and their titles
- 1.03 Type of entity
- 1.04 Type of firm
- 1.05 Year firm was established

Firm	Contact Person	Type of Entity	Type of Firm	Year
Alliance Corporation 116 E. College Street Glasgow, KY 42142-1480 (502) 651-8848	David R. Butler, Vice President		Corporation	1975
Construction Control, Inc. 409 E. Cook Road Fort Wayne, IN 46825 (219) 489-1400	Jerry P. Gibson, Senior Vice President Jack M. Krouse President	Parent Company	Corporation	1969
Guepel DeMars Hagerman, LLC. 7930 Castleway Drive Indianapolis, IN 46250 (317) 713-0641	David M. Ford, President David A. Hall, Executive Vice President	Subsidiary	Corporation	1927
The Skillman Corporation 3834 South Emerson Ave. Building A Indianapolis, IN 46203 (317) 783-6151	Larry Koenes, Executive V. P., C. O. O. James N. Boots, Vice President	Parent Company	Corporation	1972

- 1.06 Parent Company address (indicated by N/A if not applicable)
- 1.07 Former company names (indicated by N/A if not applicable)

Current Firm Name	Parent Company	Former Name
Alliance Corporation 116 E. College Street Glasgow, KY 42142-1480 (502) 651-8848	N/A	N/A
Construction Control, Inc. 409 E. Cook Road Fort Wayne, IN 46825 (219) 489-1400	N/A	N/A
Guepel DeMars Hagerman, LLC. 7930 Castleway Drive Indianapolis, IN 46250 (317) 713-0641	Hagerman Construction Corporation 510 W. Washington Blvd. Fort Wayne, IN 46802 (219) 424-1470	Guepel DeMars, Inc
The Skillman Corporation 3834 South Emerson Ave. Building A Indianapolis, IN 46203 (317) 783-6151	N/A	McGuire & Shook, Inc. (1972-1976)

Section 2: Experience

2.01 List Comparable Construction Management Projects Completed or Under Construction

Alliance Corporation

PROJECT TITLE	PROJECT LOCATION	PROJECT VALUE	OWNER	COMPLETION DATE	CONTRACT TYPE	ARCHITECT	ENGINEER
Trigg County Middle School	Cadiz, KY	\$ 9,348,000	Trigg County Board of Education 202 Main Street Cadiz, Ky 42211 Jim Wallace (502) 522-6075	Scheduled Dec, 2000	Agency CM	Community Tectonics, Inc. 201 Skyline Drive Dickson, TN 37055 Jeff Corlew (615) 441-2640	WMB, Inc. 1950 Haggard Court Lexington, KY 40505 Jim Morris (606) 299-5225
Warren County Justice Center	Bowling Green, Ky	\$28,000,000	Warren County Fiscal Court 429 E. 10 TH Street Bowling Green, KY 42101 Judge Executive Michael O. Buchanon (270) 843-4146	Scheduled Aug, 1999	Agency CM	CMW, Inc. 326 South Broadway Lexington, KY 40508 Bill Pickering (606) 254-6623	CMW, Inc. 326 South Broadway Lexington, KY 40508 Bill Pickering (606) 254-6623
National Corvette Museum	Bowling Green, KY	\$ 7,714,000	National Corvette Museum 350 Corvette Drive P.O. Box 1953 Bowling Green, KY 42101 Wendell Strode (270) 781-7973	Aug, 1994	Agency CM	Neumann Smith Assoc., Inc. 400 Galleria Office CN, Suite 555 Southfield, MI 48034 Pat Macoska (810) 352-8310	LBA, Inc. (structural) 29580 Northwestern Hwy. Suite 100 Southfield, MI 48034 Bill Lefkofsky (313) 356-7750
						Bill Finley, Architect 812 Broadway Bowling Green, KY 42101 Bill Finley (270) 843-6357	Diclemente-Siegle Eng., Inc. (M & E) 28105 Greenfield Road, Suite 200 Southfield, MI 48066 Bob Cooper (313) 569-1420
Green River Correctional Complex	Central City, KY	\$30,000,000	Commonwealth of Kentucky Finance and Admin. Cabinet Capital Annex Building Frankfort, KY 40601 Bob Schade (502) 564-3155	Oct, 1993	Agency CM	Patrick & Associates 65 East State Street, Suite 500 Columbus, Oh 43215 Allen Patrick (614) 228-3233	Haworth, Meyer & Boleyn 3 HMB Circle Frankfort, KY 40601 Fred Meyer (502) 695-9800
Bowling Green Middle School	Bowling Green, KY	\$12,026,000	Bowling Green Ind. Board of Ed. 1211 Center Street Bowling Green, KY 42101 Dr. John C. Settle (270) 746-2200	Scheduled July, 2001	Agency CM	Ross-Tarrant Architects 206 W. Main Street Lexington, KY 40507 Martha Tarrant (606) 254-4018	Stanley D. Lindsey & Associates (Structural) 1801 W. End Avenue, Suite 400 Nashville, TN 37203 Curtis Byers (615) 320-1735
							CMTA (M & E) 1409 N. Forbes Road Lexington, KY 40511 David Higgins (606) 353-0392

Attachment E
 Finance and Construction Committee
 09-09-99
 Page 3

Construction Control, Inc.

PROJECT TITLE	PROJECT LOCATION	PROJECT VALUE	OWNER	COMPLETION DATE	CONTRACT TYPE	ARCHITECT	ENGINEER
South Spencer Middle School	Rockport, IN	\$ 8,400,000	South Spencer Co. School Corp. P. O. Box 26 Rockport, IN 47635 Dr. Bart McCandless, Superintendent (812) 649-2591	December, 1997	CM Lump Sum	Veazey, Parrott & Shoulders 528 Main Street Evansville, IN 47708 Ron Lelievre, AIA (812) 423-7729	Veazey, Parrott & Shoulders 528 Main Street Evansville, IN 47708 In-House (engineering)
Heritage Hills Jr. / Sr. High School	Lincoln City, IN	\$12,000,000	North Spencer Co. School Corp. P. O. Box 316 Lincoln City, IN Mr. Ronald B. Etienne, Superintendent (812) 937-2400	Scheduled Dec, 2000	CM Lump Sum	Veazey, Parrott & Shoulders 528 Main Street Evansville, IN 47708 William Brown, AIA (812) 423-7729	Veazey, Parrott & Shoulders 528 Main Street Evansville, IN 47708 In-House (engineering)
Chesterton High School	Chesterton, IN	\$66,000,000	Duneland School Corporation 700 W. Porter Avenue Chesterton, IN 46304 Dr. Kenneth Payne, Superintendent (219) 926-1104	Scheduled August, 2000	CM Lump Sum	Fanning/Howey & Assocs., Inc. P. O. Box 584 905 S. Woodland Ave. Michigan City, IN 45361 Douglas Wickstom, AIA (219) 872-0635	Fanning/Howey & Assocs., Inc. P. O. Box 584 905 S. Woodland Ave. Michigan City, IN 45361 In-House (engineering)
Rushville High School	Rushville, IN	\$12,000,000	Rush County Schools 330 W. 8 th Street Rushville, IN 46173 Dr. Edwin A. Lyskowski (765) 932-4186	Scheduled October, 1999	CM Lump Sum	Odle McGuire & Shook Corp. 8275 Allison Pointe Trail P. O. Box 50428 Indianapolis, IN 46250 Cliff Huggins, AIA (317) 842-0000	Odle McGuire & Shook Corp. 8275 Allison Pointe Trail P. O. Box 50428 Indianapolis, IN 46250 In-House (engineering)
Garrett Jr./Sr. High School	Garrett, IN	\$12,000,000	Garrett-Keyser-Butler Community School Corp. 801 E. Houston Street Garrett, IN 46738 Alan C. Middleton, Superintendent (219) 357-4565	Scheduled Dec, 2000	CM Lump Sum	Barton-Coe-Vilamaa Architects 225 Airport North Office Park Fort Wayne, IN 46804 Kari Vilamaa, AIA (219) 489-9079	Barton-Coe-Vilamaa Architects 225 Airport North Office Park Fort Wayne, IN 46804 In-House (mechanical) SCO Engineering (electrical) 5404 Constitution Drive Fort Wayne, IN 46804 Brian Johnson, EE

Geupel DeMars Hagerman, LLC

PROJECT TITLE	PROJECT LOCATION	PROJECT VALUE	OWNER	COMPLETION DATE	CONTRACT TYPE	ARCHITECT	ENGINEER
Ivy Tech State College South Bend Instructional Center	South Bend, IN	\$29,000,000	Ivy Tech State College One West 26 th Street Indianapolis, IN 46206 Mr. Richard Tully (317) 921-4882		CM	Cole Associates, Inc. Ellerbe Becket 800 LaSalle Avenue Minneapolis, MN 55402	Cole Associates, Inc. 2211 East Jefferson Blvd. South Bend, IN 46615 Mr. Bill Stilson (219) 236-4400
Ivy Tech State College Lafayette	Lafayette, IN	\$28,000,000	Ivy Tech State College 3101 S. Creasy Lane Lafayette, IN Dr. Betty Doversberger Chancellor (765) 772-9138		CM	Scholer Group P. O. Box 808 111 West 240 S. Wea-ton Lafayette, IN 47902 Mr. Steve Ford (765) 474-1478	Scholer Group P. O. Box 808 111 West 240 S. Wea-ton Lafayette, IN 47902 Mr. Steve Ford (765) 474-1478
Hanover College Science Facilities	Hanover, IN	\$20,000,000	Hanover College P. O. Box 108 Hanover, IN 47243-0108 Mr. Terry Phillips (812) 866-7045		CM	Hastings and Chivetta Architects 700 Corporate Park Dr., Ste. 400 St. Louis, MO 63105 Mr. Chris Chivetta (314) 863-5717	Odle McGuire & Shook 8275 Allison Pointe Trail P. O. Box 50428 Indianapolis, IN 46250 Mr. Ben Rawlins (317) 842-0000
Wabash College Science/Mathematics Facility	Crawfordsville, IN	\$24,000,000	Wabash College 301 West Wabash Avenue P.O. Box 352 Crawfordsville, IN 47933 Mr. David Hadley (765) 361-6100		CM	Holabird & Root 300 West Adams Street Chicago, IL 60606 Mr. James Baird (312) 726-5960	Holabird & Root 300 West Adams Street Chicago, IL 60606 Mr. James Baird (312) 726-5960
Wabash College Allen Athletics & Recreation Center	Crawfordsville, IN	\$20,000,000	Wabash College 301 West Wabash Avenue P.O. Box 352 Crawfordsville, IN 47933 Mr. David Hadley (765) 361-6100		CM	Hastings and Chivetta Architects 700 Corporate Park Dr., Ste. 400 St. Louis, MO 63105 Mr. Chris Chivetta (314) 863-5717	Hastings and Chivetta Architects 700 Corporate Park Dr., Ste. 400 St. Louis, MO 63105 Mr. Chris Chivetta (314) 863-5717

The Skillman Corporation

PROJECT TITLE	PROJECT LOCATION	PROJECT VALUE	OWNER	COMPLETION DATE	CONTRACT TYPE	ARCHITECT	ENGINEER
USI General Purpose Classroom Bldg.	Evansville, IN	\$12,529,459	University of Southern Indiana 8600 University Blvd. Evansville, IN 47712	1999	CMA Lump Sum AIA B801	Hastings & Chivetta Architects 101 S. Hanley, STE 1700 St. Louis, MO 63105 Steve DeHecker (314) 863-5717	Hastings & Chivetta Architects 101 S. Hanley, STE 1700 St. Louis, MO 63105 Steve DeHecker (314) 863-5717
Christel Dehaan Fine Arts Center (new facility)	Indianapolis, IN	\$7,995,984	University of Indianapolis 1400 East Hanna Avenue Indianapolis, IN 46227 Jerry Israel, President (317) 788-3211	1994	CMA Lump Sum AIA B801	Ratio Architects, Inc. 36 South Pennsylvania St. Indianapolis, IN 46204 Bill Browne, AIA (317) 633-4040	(Structural) Fink Roberts & Petrie 3307 W. 96 th St. Indianapolis, IN 46268 (Engineer) Fulk & Gardner, Inc. 7825 E. 89 th St. Indianapolis, IN 46256 Mike Robinson (317) 849-5211
Chrysler High School Addition/Renovation	New Castle, IN	\$27,500,000	New Castle Community School Corporation 522 Elliott Avenue New Castle, IN 47362	October, 1999	CMA Lump Sum AIA B801	Schmidt Associates Architects, Inc. 320 E. Vermont Street Indianapolis, IN 46204 Wayne Schmidt (317) 263-6226	Schmidt Associates Architects, Inc. 320 E. Vermont Street Indianapolis, IN 46204 Wayne Schmidt (317) 263-6226
Construction of New Classroom Building Bloomington Campus	Bloomington, IN	\$15,322,000	Indiana Vocational Technical College One West 26 th Street Indianapolis, IN 46206 Richard Tully (317) 929-4949	2001	CMA Lump Sum AIA B801	The Odle McGuire & Shook Corporation 6765 State Road 37 North Bloomington, IN 47402 Cliff Huggins (812) 876-2020	
Hamilton Southeastern High School Addition/Renovation	Fishers, IN	\$52,000,000	Hamilton Southeastern Schools 13485 Cumberland Road Fishers, IN 46038 Dr. Charles Leonard, Superintendent (317) 848-0966	August, 1999	CMA Lump Sum AIA B801	Fanning/Howey Associates, Inc. 3750 Priority Way S. Drive, Suite 110 Indianapolis, IN 46240 (317) 848-0966	Fanning/Howey Associates, Inc. 3750 Priority Way S. Drive, Suite 110 Indianapolis, IN 46240 (317) 848-0966

2.02 Comparable General Construction Projects Completed or Under Construction

Alliance Corporation

PROJECT TITLE	PROJECT LOCATION	PROJECT VALUE	OWNER	COMPLETION DATE	CONTRACT TYPE	ARCHITECT	ENGINEER
314-Bed/Medium Security Dorm Green River Correctional Complex	Central City, KY	\$6,903,000	Commonwealth of Kentucky Finance and Admin. Cabinet Capital Annex Building Frankfort, KY 40601 Gary Postlewaite (502) 564-3155	Scheduled Aug, 1999	Lump Sum	CMW, Inc. 326 South Broadway Lexington, KY 40508 Joe Martinolich (606) 254-6623	CMW, Inc. (M & E) 326 South Broadway Lexington, KY 40508 Joe Martinolich (606) 254-6623 Pyramid Consulting (Structural) 1391 Leestown Road Lexington, KY 40508 Mohammad Seraji (606) 252 1678
Warren Central High School	Bowling Green, Ky	\$ 7,497,158	Warren County Board of Education 303 Lovers Lane Bowling Green, KY 42101 Leonard McCoy (270) 842-0702	July, 1998	Lump Sum	Sherman/Carter/Barnhart 2405 Harrodsburg Road Lexington, KY 40504 Joe Nolasco (606) 224-1351	Poage Engineers and Assoc. 462 E. High Street Lexington, KY 40507 Chris Kelley (606) 255-9034
Grayson County Middle School	Leitchfield, KY	\$ 7,348,700	Grayson County Board of Education 909 Brandenbrug Road Leitchfield, KY 42754 Dr. Craig Bangston (270) 259-4012	February, 1997	Lump Sum	Ross-Tarrant Architects 206 W. Main Street Lexington, KY 40507 Jim Ross (606) 254-4018	Kaiser-Taulbee Assoc., (M & E) 190Jefferson Street Lexington, KY 40508 Bill Lyons (606) 253-2459 Stanley D. Lindsey & Assoc. (Structural) 1801 West End Avenue, Ste. 400 Nashville, TN 37203-2509 Curtis Byers (615) 320-1735
Lost River Elementary School	Bowling Green, KY	\$ 3,700,000	Warren County Board of Education 303 Lovers Lane Bowling Green, KY 42101 Leonard McCoy (270) 842-0702	May, 1995	Lump Sum	Sherman/Carter/Barnhart 2405 Harrodsburg Road Lexington, KY 40504 Joe Nolasco (606) 224-1351	Shrout & Tate Engineers (M & E) 160 Burt Road Lexington, KY 40503 Tom Tate (606) 277-8177 Poage Engineers & Assoc. (Structural) 462 East High Street Lexington, KY 40507 Brian Poage (606) 255-9034
Taylor County Hospital	Campbellsville, KY	\$ 3,400,000	Taylor County Hospital 1700 Old Lebanon Road Campbellsville, KY 42718 David Hayes (502) 465-3561	August, 1994	Lump Sum	Omni Architects 212 North Upper Street Lexington, KY 40507 Al Warner (606) 252-6664	White, Walker & McReynolds 2041 Regency Circle Lexington, KY 40503 Tom McReynolds (606) 278-9528

Construction Control, Inc.

Construction Control, Inc. is a construction management only company.

Guepel DeMars Hagerman, LLC.

PROJECT TITLE	PROJECT LOCATION	PROJECT VALUE	OWNER	COMPLETION DATE	CONTRACT TYPE	ARCHITECT	ENGINEER
New Wellness Center Fieldhouse Alterations Earlham College	Richmond, IN	\$11,000,000	Earlham College 801 National Road West Richmond, IN 47374 (765) 983-1200		GC	Hastings & Chivetta Architects 101 S. Hanley Rd., Ste. 1700 St. Louis, MO (314) 863-5717	
Coleman/Morris Center University of Notre Dame	Notre Dame, IN	\$12,000,000	University of Notre Dame Knights of Columbus HCC Notre Dame, IN 46556 (219) 631-5000		GC	S.L.A.M. Collaborative 80 Glastonbury Blvd. Glastonbury, CN 06033 (860) 657-8077	
White River Gardens Museum/Garage Complex	Indianapolis, IN	\$ 9,500,000	Indianapolis Zoological Society 1202 W. Washington Street Indianapolis, IN 46222 Mr. Paul Grayson (317) 630-2001		GC	Wollen Molzan & Partners, Inc. 47 S. Pennsylvania Street Indianapolis, IN 46204 (317) 632-7484	
Parkview Memorial Hospital	Fort Wayne, IN	\$25,000,000	Parkview Memorial Hospital 2200 Randallia Avenue Fort Wayne, IN 46805 (219) 484-6636		DB	HDR Architecture, Inc. 8420 W. Bryn Mawr Avenue Suite 350 Chicago, IL Mr. Norman Dean (773) 380-7900	
IPFW Science Building Indiana University Purdue University	Fort Wayne, IN	\$18,135,044	IU & Purdue Univ. of Ft. Wayne 2101 East Coliseum Blvd. Fort Wayne, IN 46805 Mr. David Daniels Dr. Evangelos Coufoundakis (219) 481-6100		GC	Scholer Corporation P. O. Box 808 Wea-Ton US & 31 South Lafayette, IN 47905 (765) 474-1478	

The Skillman Corporation

N/A

We are not a General Contractor. The Skillman Corporation was founded as a "pure" Project Administration/Construction Management Firm that would act as the Owner's Agent in a fiduciary role throughout the duration of the project. We continue to provide a professional management service which provides the Owner with the necessary expertise and resources to take advantage of the project delivery methods that best achieves the project's unique objectives and meets the Owner's requirements.

2.03 List the volume of construction management work performed in the last five (5) years.

Year	Firm Name	Amount	No. of Projects
1998	Alliance Corporation	\$ 19,700,000	06
	Construction Control, Inc	176,244,146	18
	Geupel Demars Hagerman, LLC	103,853,019	21
	The Skillman Corporation	158,635,482	46
1997	Alliance Corporation	\$ 17,400,000	07
	Construction Control, Inc	217,450,000	20
	Geupel Demars Hagerman, LLC	96,117,185	19
	The Skillman Corporation	139,671,124	40
1996	Alliance Corporation	\$ 18,300,000	07
	Construction Control, Inc	250,033,000	19
	Geupel Demars Hagerman, LLC	93,409,076	11
	The Skillman Corporation	138,910,667	35
1995	Alliance Corporation	\$ 26,000,000	06
	Construction Control, Inc	372,568,156	21
	Geupel Demars Hagerman, LLC	223,617,701	16
	The Skillman Corporation	123,763,564	33
1994	Alliance Corporation	\$ 16,400,000	05
	Construction Control, Inc	182,016,728	22
	Geupel Demars Hagerman, LLC	143,500,000	15
	The Skillman Corporation	67,500,000	38

2.04 Ongoing Work

Provide a statement of total company contracts for construction management services for the current year and for the past two (2) years.

Year	Firm Name	Number of Active Contracts	Original Value	Value Completed	Balance to Complete
Current	Alliance Corporation	06	\$ 28,804,996	\$ 2,308,040	\$ 26,496,956
	Construction Control, Inc.	06	1,910,615	47,708	1,862,907
	Geupel DeMars Hagerman, LLC	23	457,000,000	132,000,000	170,000,000
	The Skillman Corporation	11	171,350,000	0	171,350,000
One Year Old	Alliance Corporation	04	\$ 15,232,940	\$12,736,967	\$ 2,495,973
	Construction Control, Inc.	16	2,131,845	1,490,502	641,343
	Geupel DeMars Hagerman, LLC	21	391,000,000	137,000,000	195,000,000
	The Skillman Corporation	23	242,200,000	21,600,000	220,600,000
Two Years Old	Alliance Corporation	01	\$ 24,750,000	\$21,938,540	\$ 2,811,460
	Construction Control, Inc.	12	6,603,924	5,951,355	652,569
	Geupel DeMars Hagerman, LLC	19	374,000,000	145,000,000	222,000,000
	The Skillman Corporation	17	185,730,000	72,560,000	113,170,000

Section 3 Proposed Project Team

- 3.01 Organizational Chart Follows This Sheet.

- 3.02 Responsibilities of Each Position and Person For This Project.
(See RFP.)

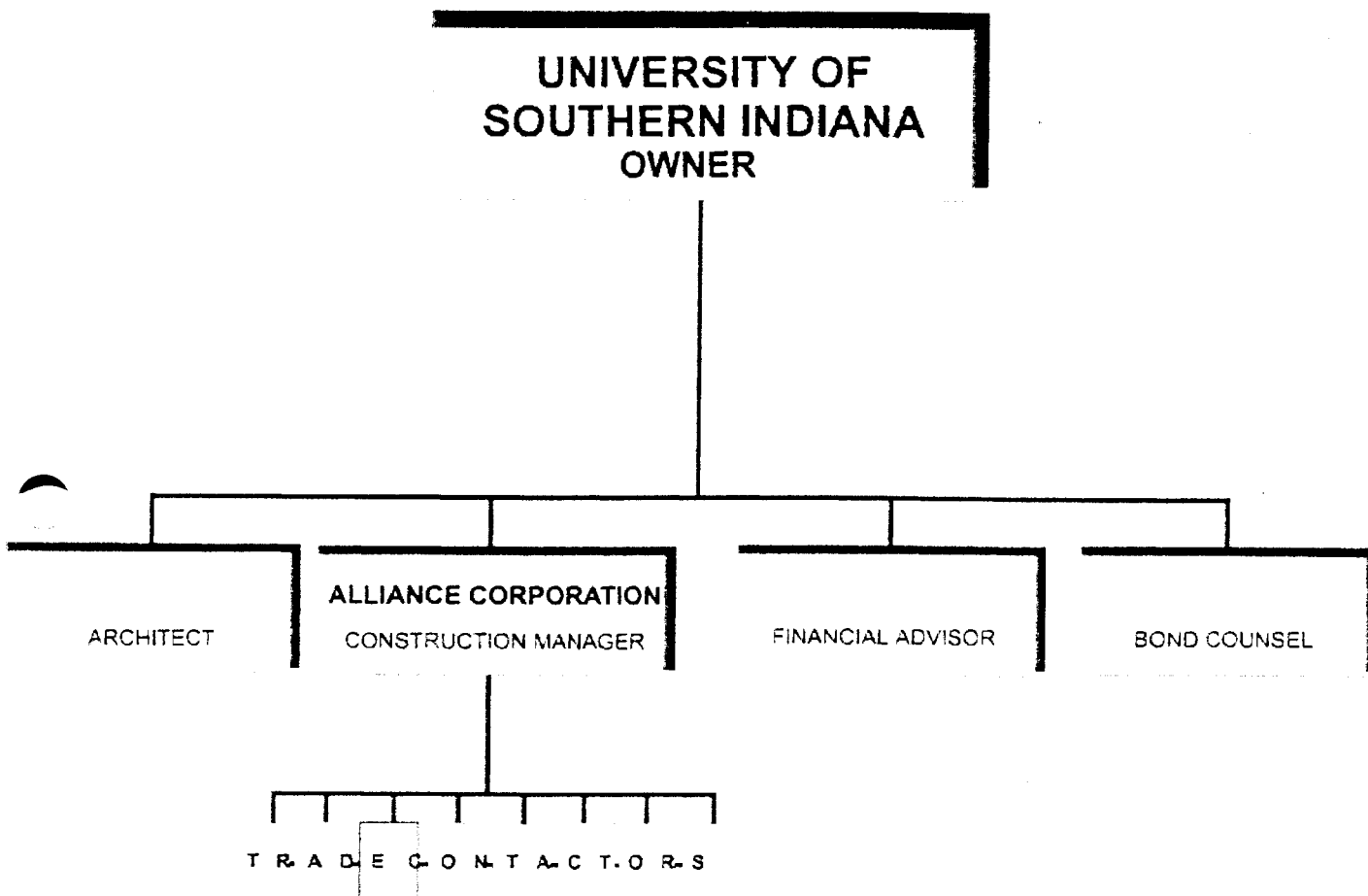
- 3.03 Detailed Resumes of Each individual indicated on the organization chart.
(See RFP.)

- 3.04 Detailed Schedule of Individuals planned to be utilized in this project.
(See RFP.)

- 3.05 Direct Personnel Expenses
(See RFP.)

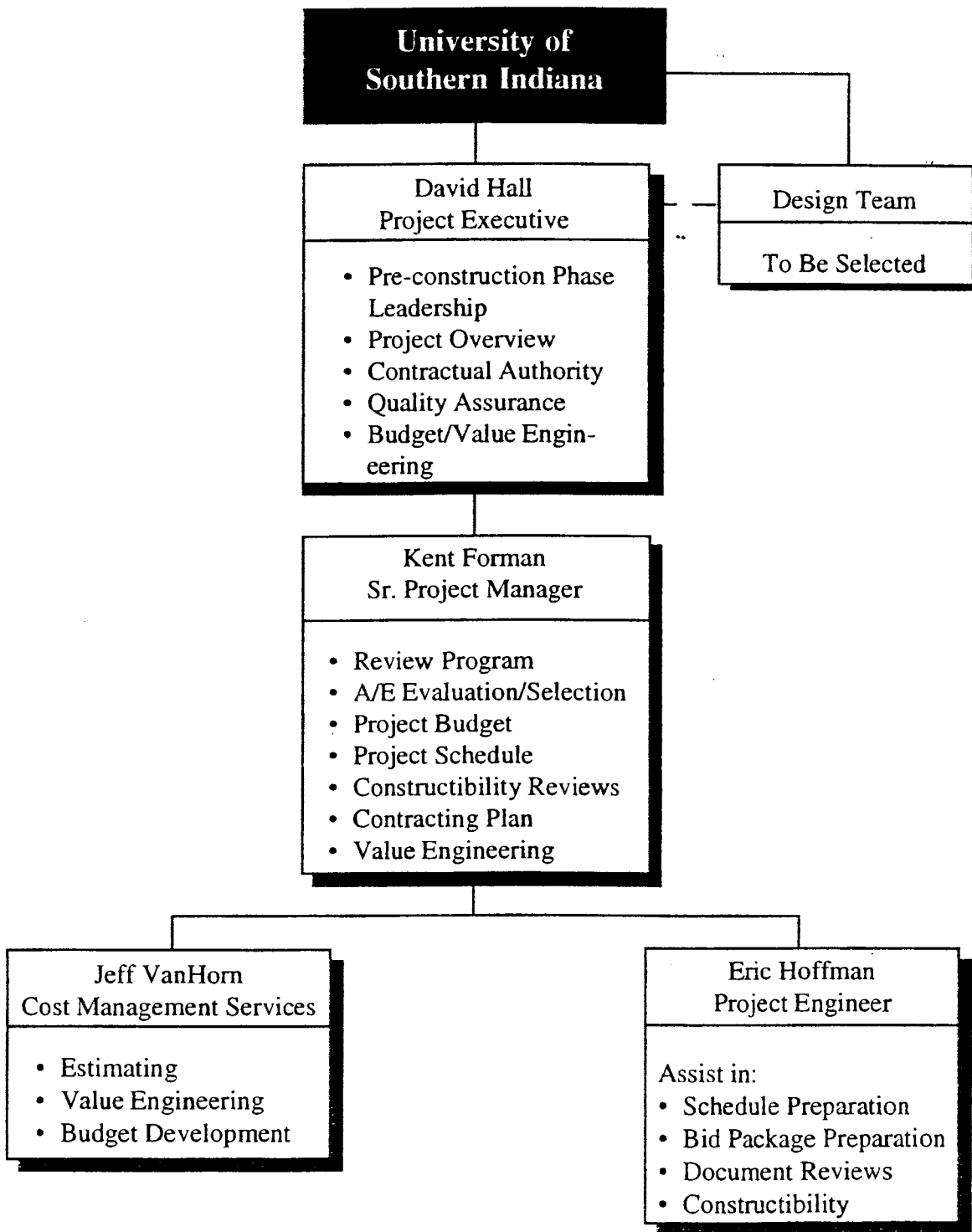


Project Team

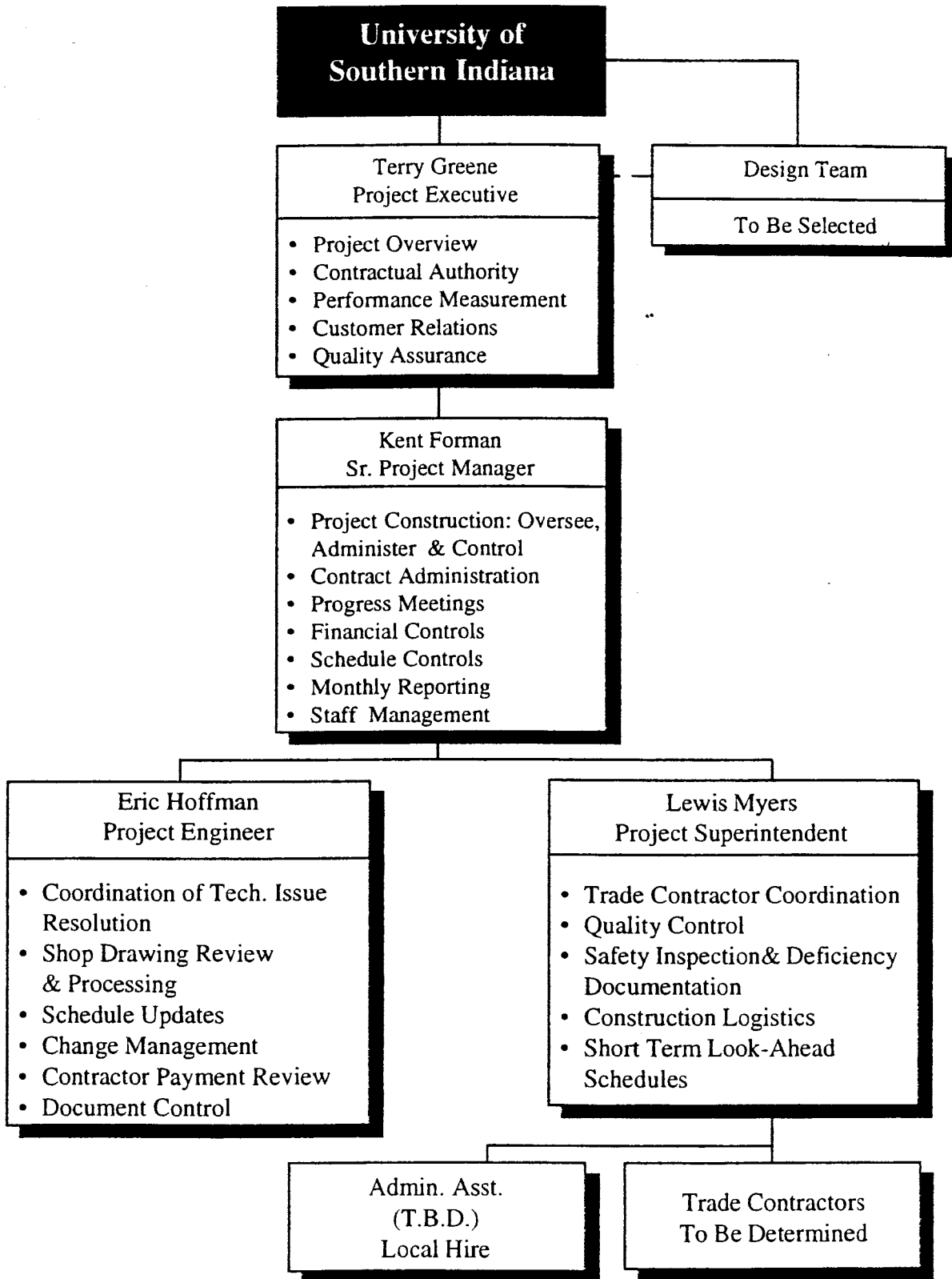


3.01 Functional Organizational Plan

Pre-Construction Phase



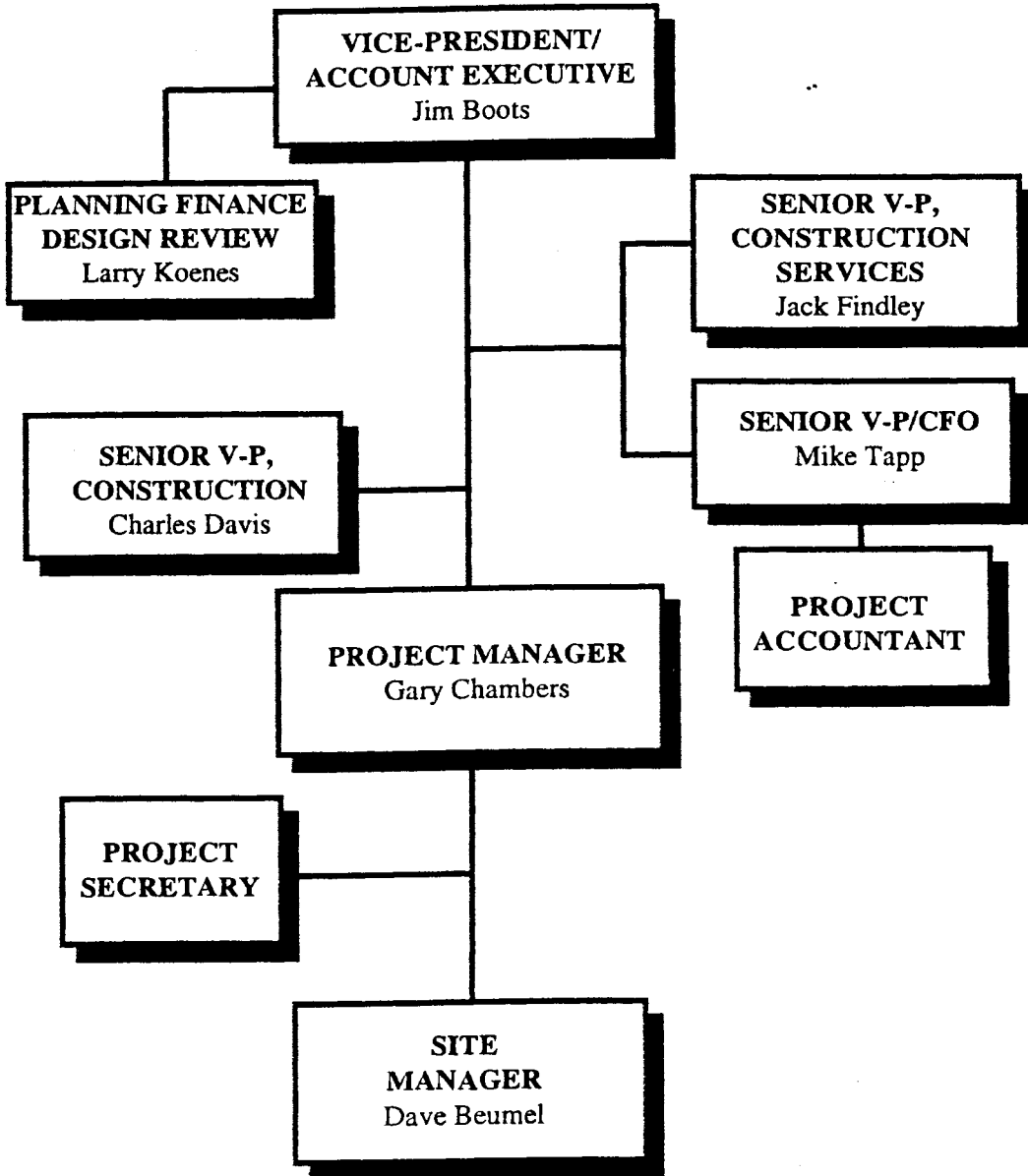
Construction Phase





Skillman Corporation

PROJECT TEAM



Section 4 – Project Approach

- 4.01 Describe your plans to manage the design process during Phase I to ensure achievement of goals for costs, schedule and quality control.
(see RFP)
- 4.02 Describe your plans to manage the design, bidding, award, construction and closeout process during Phase II to achieve the goals of cost, schedule and quality assurance.
(see RFP)
- 4.03 Describe your proposed estimating, budgeting and cost control systems. Provide examples.
(see RFP)
- 4.04 On your last five projects bids, what was your original total construction cost estimate and what was the actual total bid?
(page follows in this section)
- 4.05 Describe your proposed scheduling systems to be utilized in both Phase I and Phase II. Is a computer software program used, and if so, which one? Provide examples.
(see RFP)
- 4.06 On your last five completed projects, what was the completion schedule and what was the actual completion date? How did you control the construction progress?
(page follows in this section)
- 4.07 Describe your proposed method of quality control/quality assurance. Provide examples of documentation from previous projects
(see RFP)
- 4.08 Describe your proposed project control systems that include submittals, changes, correspondence, cost reporting, and other documentation. Provide examples.
(see RFP)
- 4.09 Describe any unique or innovative approaches you have utilized on previous projects that may be applicable to the project planned by the University of Southern Indiana. Include such issues as value engineering and other cost or time savings techniques previously utilized or proposed.
(see RFP)
- 4.10 How many bid packages (other than equipment and furnishings) did you have on your last five construction management projects? What were the packages for (general, mechanical, electrical, equipment, etc.), and how many bids for each bid package did you receive?
(page follows in this section, see RFP for the package types)

4.04 Original Estimate Vs. Actual Bid

Firm Name	Project	Budget	Actual
Alliance Corporation	Trigg County Middle School Cadiz, KY	\$9,794,760	\$8,920,329
	Phillip Sharp Middle School – PhaseII Falmouth, KY	\$2,670,000	\$2,835,700
	Wayland Alexander Elementary School Hartford, KY	\$5,212,941	\$4,982,443
	Summit Elementary School Ashland, KY	\$6,450,600	\$6,497,813
	Warren County Regional Jail Addition Bowling Green, KY	\$4,340,400	\$3,848,400

Firm Name	Project	Budget	Actual
Construction Control, Inc	Garrett-Keyser-Butler Jr/Sr High School	\$12,208,736	\$11,185,611
	North Spencer Middle School	\$12,115,633	\$11,233,973
	Chesterton High School	\$63,400,000	\$62,842,943
	Rushville High School	\$12,612,202	\$11,322,512
	West Central Jr/Sr High School	\$ 5,518,848	\$ 4,958,159

Firm Name	Project	Budget	Actual
Geupel DeMars Hagerman, LLC	Ivy State College Lafayette, IN	\$18,766,008	\$16,757,975
	Ben Davis High School Indianapolis, IN	\$61,541,650	\$57,225,513
	Wabash College Allen Athletics & Recreation Crawfordsville, IN	\$20,414,824	\$16,907,184
	Indiana University School of Law Indianapolis, IN	\$28,775,034	\$26,319,200
	Park Tudor Upper School Indianapolis, IN	\$ 9,737,600	\$ 9,556,398

Firm Name	Project	Budget	Actual
The Skillman Corp.	M.S.D. of Pike Twp.,Elementary School #9	\$11,055,817	\$10,714,595
	Carmel Clay Schools, Elementary School #10	\$ 9,896,199	\$ 9,507,800
	Penn-Harris-Madison School Corporation Schmucker Middle School	\$ 7,842,691	\$ 7,383,801
	Maconaquah School Corporation Maconaquah Elementary *Technical wiring included in estimate but not yet bid.	\$ 9,182,608*	\$ 8,312,873*
	Eastern Howard School Corp. Eastern Howard Elementary School	\$ 4,381,879	\$ 3,963,508

4.06 Anticipated Completion Schedule Vs. Actual Completion Date and how to control the construction process

Alliance Corporation

Project	Scheduled Months	Actual Months
Camp Dick Robinson Elementary	16	16
Olmstead Elementary School	16	16
Wayland Alexander Elementary School	18	18
Ohio County Middle School	19	19
Wayne County High School	22	22

Construction Control, Inc.

Construction progress will be controlled by reviewing the work of the contractors and holding on site Monday meetings with the trade foremen. In those meetings the upcoming two-week schedule of events are reviewed and each trade foreman is made aware of the importance of staying on schedule. The obligation that each one has is to circumvent delays, which would affect other contractors and cause overtime activities. That additional expense to the contractors provides impetus to stay on schedule.

Project	Scheduled Completion	Actual Completion
Western Wayne Elementary School	Sept 1997	Aug 1997
South Spencer Middle School	Aug 1997	Sept 1997
Crestview Middle School	Aug 1998	Aug 1998
Northern Heights Elementary	Sept 1998	Oct 1998
Indian Springs Middle School	Aug 1997	Aug 1997

Geupel DeMars Hagerman, LLC

The Construction progress will be controlled using specific Trade Contractor Schedules which will serve as our management tool for coordinating the activities of the various trade contractors. This schedule can be plotted for short-term look-ahead purposes and ensures that the complex array of construction activities are properly sequenced and that any gaps in construction logic are closed

Project	Scheduled Completion	Actual Completion
Hoosier Park-Claypool OTB	March, 1999	March, 1999
Putnam County Hospital	May, 1998	May, 1998
Lilly Clinic	March, 1998	February, 1998
Marion County Jail	October, 1997	October, 1997
North White Schools	June, 1997	July, 1997

The Skillman Corporation:

Construction progress will be controlled by developing a site utilization plan that includes all activities, i.e., site access, our own facilities, designation of areas for contractors to provide their facilities, lay down areas, etc. Our facilities will be visible to the contractors and will provide a view of the entire site.

Will be responsible for the coordination of all contractors on site, and will coordinate construction work with delivery and installation of owner purchased equipment. Also, will be the coordinating entity between construction operations and the Design Professional's and University of Southern Indiana's requirements.

Project	Scheduled Completion	Actual Completion
Merrillville Com. School Corp.	July, 1999	July, 1999
Tri-County School Corporation	February, 1999	February, 1999
Hamilton SE Schools, Elem. School	August, 1998	August, 1999
Hamilton SE Schools, Middle School	April, 1999	May, 1999
Hamilton SE Schools, Bid Group I	July, 1997	July, 1997

4.10 How many bid packages (other than equipment and furnishings) did you have on your last five (5) construction management projects? How many bids for each bid package did you receive?

Alliance Corporation

Project	Number of Bid Packages	Average Number of Bids For Each Package
Trigg County Middle School Cadiz, KY	26	4
Phillip Sharp Middle School Falmouth, KY	18	3
Summit Elementary School Ashland, KY	25	3
Wayland Alexander Elem. School Hartford, KY	24	3
Warren County Regional Jail Bowling Green, KY	21	2

Construction Control, Inc.

Project	Number of Bid Packages	Average Number of Bids For Each Package
Garrett Jr/Sr High School	22	3-4
Heritage Hills Jr/Sr High School	20	3-4
Rushville High School	25	3-4
East Richland Elementary	21	3-4
Frontier Elementary/High School	25	3-4

Geupel DeMars Hagerman, LLC

Project	Number of Bid Packages	Average Number of Bids For Each Package
Allen Athletics & Recreation Center Crawfordsville, IN	29	4
Ben Davis High School Indianapolis, IN	37	4
Ivy Tech State College Lafayette, IN	19	4
Hanover New Science Building Hanover, Indiana	18	4
Linton-Stockton High School Linton, IN	13	5

The Skillman Corporation

Project	Number of Bid Packages	Average Number of Bids For Each Package
M.S.D. of Pike Township Elementary School #9	17	4
Carmel Clay Schools Elementary School #10	13	6
Penn-Harris-Madison School Corp. Schmucker Middle School	18	3
Maconaquah School Corporation Maconaquah Elementary	15	4
Eastern Howard School Corp. Eastern Howard Elem. School	14	5

Section 5: Financial Capabilities

5.01 Last year-end, audited annual report.
(See RFP)

5.02 Provide a copy of the most current financial statement (balance sheet and income statement) signed by the Chief Financial Officer. If the Proposer is a subsidiary or joint venture, provide the same detail of all involved entities.
(See RFP)

Section 6: Other Factors

6.01 Judgements, Claims, Lawsuits

*Are there any judgements, claims and/or outstanding against, or involving your firm (exclude personal injury and property damage lawsuits)?
If yes, submit details on a separate sheet.*

Name of Firm	Yes	No
Alliance Corporation	✓	
Construction Control, Inc.		✓
Geupel DeMars Hagerman, LLC		✓
The Skillman Corporation		✓

6.02 Safety

Describe your Safety Program and give incidence and severity rates for the last three (3) years. List any OSHA or IOSHA citations received in the last three (3) years and their outcome.

Alliance Corporation:

Alliance Corporation has a safety program, hazardous communications program and blood borne pathogens program. They also have first aid and blood borne pathogens kits on the jobsites. Weekly Toolbox Meetings are conducted on each jobsite. All new hires are given safety orientation training. Our project superintendents go through annual re-certification of CPR and first aid training.

OSHA & IOSHA safety information included in the RFP.

Construction Control, Inc

Safety program was updated in mid 1998 to reflect all the current regulations for the industry. They employed I&RM, Risk Control Division and their director who is a registered CSP.

There is a hard cover binder made available to all work sites which contains their program.

They review the OSHA Federal Regulations materials as they become available and insert fliers from the Bureau of National Affairs, Inc.

OSHA & IOSHA safety information included in the RFP.

Geupel DeMars Hagerman, LLC

Mr. Richard Swanson is the Corporate Safety Director. His role consists of routine visits to all GDH projects and weekly visits to significant projects. It is his job to bring the jobsite into compliance with all applicable federal, state, and local regulations.

They have a comprehensive safety program which includes: employee training, "Tool Box Talks" for Subcontractors, routine and unannounced site visits/inspections by safety engineers, and reporting for action follow-up.

Included under a separate cover is the Enhanced Project Safety Program.

OSHA & IOSHA safety information included in the RFP.

6.02 Page 2 of 2

The Skillman Corporation

Each contractor provides the Project Superintendent a copy of the Contractor's Safety Program and Rules. Skillman demands the program include OSHA/IOSHA regulations as a minimum requirement.

The goal is to eliminate all accidents and health issues on the Construction Projects.

Safety will be discussed at the Job Progress Meetings as it pertains to the nature of the construction taking place.

A more detailed list is included in the RFP as well as OSHA/IOSHA Citations.

PART C – FEE PROPOSAL

Section 2 Phase I – Fees For \$12,600,000 Project Budget

A Fixed Fee – Lump Sum or Fee Based On Percent of Construction Cost

Firm Name	Fixed Fee – Lump Sum	Fee Based On Percent Of Construction Cost
Alliance Corporation	\$ 156,000.00	1.24%
Construction Control, Inc	\$ 138,364.00	
Geupel DeMars Hagerman	\$112,831.00	
The Skillman Corporation	\$ 71,020.00	

B Staff Cost

Staff Position	Estimated Hours			
	Alliance Corporation	Construction Control, Inc.	Geupel DeMars Hagerman, LLC	The Skillman Corporation
Project/Account Executive	652	320	427	148
Project Superintendent	112			
On Site Construction Manager		80		20
Project Manager	672	1120	136	360
Project Secretary/Clerk	248	480		90
Estimating/Budget	120	200	400	510
Scheduling				48
Accounting				10
Budget Coordinator	40			
Project coordinator/Engineer	200		210	
Total	2,044	2,200	1,173	1,186

B Staff Cost, Page 2

	DPE Hourly Rate			
Staff Position	Alliance Corporation	Construction Control, Inc.	Geupel DeMars Hagerman, LLC	The Skillman Corporation
Project/Account Executive	\$75.00	\$47.67	\$74.00	\$55.83
Project Superintendent	\$40.00			
On Site Construction Manager		\$28.86		\$36.03
Project Manager	\$30.00	\$31.49	\$56.00	\$45.08
Project Secretary/Clerk	\$15.00	\$16.01		\$18.70
Estimating/Budget	\$35.00	\$27.76	\$53.00	\$34.91
Scheduling				\$34.91
Accounting				\$22.02
Budget Coordinator	\$30.00			
Project coordinator/Engineer	\$20.00		\$34.00	

	Cost (estimated hours x DPE hourly rate)			
Staff Position	Alliance Corporation	Construction Control, Inc.	Geupel DeMars Hagerman, LLC	The Skillman Corporation
Project/Account Executive	\$48,900.00	\$15,254.00	\$31,598.00	\$ 8,262.00
Project Superintendent	\$ 4,480.00			
On Site Construction Manager		\$ 2,308.00		\$ 720.00
Project Manager	\$20,160.00	\$35,268.00	\$ 7,616.00	\$16,228.00
Project Secretary/Clerk	\$ 3,720.00	\$ 7,684.00		\$ 1,683.00
Estimating/Budget	\$ 4,200.00	\$ 5,552.00	\$21,200.00	\$21,312.00
Scheduling				\$ 1,675.00
Accounting				\$ 220.00
Budget Coordinator	\$ 1,200.00			
Project coordinator/Engineer	\$ 4,000.00		\$ 7,140.00	
Total	\$86,660.00	\$66,066.00	\$67,554.00	\$50,100.00

B Staff Cost, Page 3

Fee Proposal Summary –Phase I - \$12,600,000 Project Budget

Firm	Fixed Fee Cost Lump Sum (A)	DPE Cost (B)	Admin. Cost (A-B) (C)	Estimated Hours (D)	Ratio of Admin Cost To Lump Sum Cost (C/A) (E)	DPE Average Cost Per Manhour (B/D) (F)
Alliance Corporation	\$156,000.00	\$86,660.00	\$69,340.00	2,044	.44	42.40
Construction Control, Inc.	\$138,364.00	\$66,066.00	\$72,298.00	2,200	.52	30.03
Geupel DeMars Hagerman LLC	\$112,831.00	\$67,554.00	\$45,277.00	1,173	.40	57.60
The Skillman Corporation	\$71,020.00	\$50,100.00	\$20,920.00	1,186	.29	42.24

C The following noted project administration and construction management services are included in Phase I fee proposal:

Description of Service	Alliance Corporation	Construction Control, Inc.	Geupel DeMars Hagerman, LLC	The Skillman Corporation
Planning Phase:				
Review of Educational Planning Specifications	YES	YES	YES	YES
Project Feasibility	YES	YES	YES	YES
Financial Planning	YES	YES	YES *(See note below)	YES
Cash Flow Projections	YES	YES	YES	YES
Site Selection	YES	YES	YES	YES
Contract Development	YES	YES	YES	YES
Professional Service Selection and Evaluation	YES	YES	YES	YES
Team Organization and Responsibilities List	YES	YES	YES	YES
Project Strategies	YES	YES	YES	YES
Preliminary Project Scheduling	YES	YES	YES	YES
Assist with Planning Presentations	YES	YES	YES	YES
Others (Please List):				
Construction Logistics Planning			YES	
Cost Model Development			YES	
Labor Market Survey			YES	
Quality Assurance Plan	YES			
Management Information System	YES			
Affirmative Action Plan	YES			
Review of Partnering Structure	YES			
Pre-Construction Phase:				
Review of Design Criteria with Need Assessment	YES	YES	YES	YES
Design and Systems Evaluations	YES	YES	YES	YES

Financial Planning Note: Provide cost estimate/model and general project information to assist in financial planning

Description of Service	Alliance Corporation	Construction Control, Inc.	Geupel DeMars Hagerman, LLC	The Skillman Corporation
Review of Plans for Constructability	YES	YES	YES	YES
Cost Estimates for Schematic Design, Design Development, and Working Drawings Stages	YES	YES	YES	YES
Value Engineering of Systems and Building Components	YES	YES	YES	YES
Life Cycle Cost Analysis	YES	YES	YES (AAE)	YES
Energy Studies of Equipment and Systems	YES	YES	YES	NO
Alternate System Analysis	YES	YES	YES	YES
Code Compliance Review	NO	NO (PAC)	YES (IAE)	NO
Directing of Re-Design When Required	YES	YES	YES	YES
Management of all Disciplines with Design Schedule	YES	YES	YES (IAE)	YES
Participation in all Agency and Financial Meetings	YES	YES	YES *	YES
Development of Construction Contract Language	YES	YES	YES	YES
Bid Advertising	YES	YES (costs by Owner)	YES	YES
Bidder Interest Generation	YES	YES	YES	YES
Bid Document Distribution	YES	YES	YES	YES
Pre-Bid Meetings	YES	YES	YES	YES
Bid Evaluation and Recommendations	YES	YES	YES	YES
Pre-Award Meeting	YES	YES	YES	YES
Contract Preparation	YES	YES	YES	YES
Others (Please List)				
EEO, MBE/WBE/DBE Compliance Reviews			YES	
Financial Evaluation and Recommendation	YES			
Bidding and Project Scheduling			YES	

* As Applicable to Project
 AAE = Assist Architect/Engineer
 PAC = Provided at Additional Cost
 IAE = In Conjunction with Architect/Engineer

Section 3 Phase II – Fees for \$12,600,000 Project Budget

A Fixed Fee – Lump Sum or Fee Based On Percent of Construction Cost

Firm Name	Fixed Fee – Lump Sum	Fee Based On Percent Of Construction Cost
Alliance Corporation	\$ 616,000.00	4.89%
Construction Control, Inc	\$ 305,000.00	
Geupel DeMars Hagerman	\$524,372.00	
The Skillman Corporation	\$488,330.00	

B Staff Cost

Staff Position	Estimated Hours			
	Alliance Corporation	Construction Control, Inc.	Geupel DeMars Hagerman, LLC	The Skillman Corporation
Project/Account Executive	519	118	156	180
Project Superintendent	2826		2,596	
Assistant Superintendent	260			
On Site Construction Manager		2,655		3,042
Project Manager	2,348	826	718	1,080
On Site Secretary		2,552		
Project Secretary/Clerk	2,815	944	2,596	540
Estimating/Budget	312	118		108
Scheduling				72
Accounting		236		180
Budget Coordinator	228			
Project coordinator/Engineer	2,825		218	
Total	12,133	7,449	6,284	5,202

B Staff Cost, Page 2

	DPE Hourly Rate			
Staff Position	Alliance Corporation	Construction Control, Inc.	Geupel DeMars Hagerman, LLC	The Skillman Corporation
Project/Account Executive	\$75.00	\$47.67	\$78.00	\$55.83
Project Superintendent	\$40.00		\$45.00	
Assistant Suuperintendent	\$30.00			
On Site Construction Manager		\$28.86		\$36.03
Project Manager	\$30.00	\$31.49	\$59.00	\$45.08
On Site Secretary		\$12.14		
Project Secretary/Clerk	\$15.00	\$16.01	\$25.00	\$18.70
Estimating/Budget	\$35.00	\$27.76		\$34.91
Scheduling				\$34.91
Accounting		\$18.52		\$22.02
Budget Coordinator	\$18.00			
Project coordinator/Engineer	\$20.00		\$36.00	

	Cost (estimated hours x DPE hourly rate)			
Staff Position	Alliance Corporation	Construction Control, Inc.	Geupel DeMars Hagerman, LLC	The Skillman Corporation
Project/Account Executive	\$38,925.00	\$ 5,625.00	\$ 12,168.00	\$ 10,049.00
Project Superintendent	\$ 113,040.00		\$116,820.00	
Assistant Superintendent	\$ 7,800.00			
On Site Construction Manager		\$ 76,623.00		\$109,603.00
Project Manager	\$70,440.00	\$ 26,011.00	\$ 42,362.00	\$ 48,686.00
On Site Secretary		\$ 30,981.00		
Project Secretary/Clerk	\$ 42,225.00	\$ 15,113.00	\$ 64,900.00	\$ 10,098.00
Estimating/Budget	\$ 9,360.00	\$ 3,276.00		\$ 3,770.00
Scheduling				\$ 2,514.00
Accounting		\$4,371.00		\$ 3,964.00
Budget Coordinator	\$ 4,104.00			
Project coordinator/Engineer	\$ 56,500.00		\$ 7,848.00	
Total	\$342,394.00	\$162,000.00	\$244,098.00	\$188,684.00

B Staff Cost, Page 3

Fee Proposal Summary –Phase II

Firm	Fixed Fee Cost Lump Sum (A)	DPE Cost (B)	Admin. Cost (A-B) (C)	Estimated Hours (D)	Ratio of Admin Cost To Lump Sum Cost (C/A) (E)	DPE Average Cost Per Manhour (B/D) (F)
Alliance Corporation	\$616,000.00	\$342,394.00	\$273,606.00	12,133	.44	28.22
Construction Control, Inc.	\$305,000.00	\$162,000.00	\$143,000.00	7,449	.47	21.75
Geupel DeMars Hagerman LLC	\$524,372.00	\$244,098.00	\$280,274.00	6,284	.53	38.84
The Skillman Corporation	\$488,330.00	\$188,684.00	\$299,646.00	5,202	.61	36.27

Total Cost Summary

Phase I and Phase II Combined

Firm	Total fixed fee or lump sum	Total DPE Cost	Total administrative cost (A-B)	Total Estimated hours	Ratio of Admin. to lump sum cost (C/A)	Total DPE Average cost Per manhour (B/D)	Approximate % of total fees to construction cost (*) (G)
	(A)	(B)	(C)	(D)	(E)	(F)	(G)
Alliance Corporation	\$772,000	\$429,054	\$342,946	14,177	.44	\$30.27	6.13
Construction Control, Inc.	\$443,364	\$228,066	\$215,298	9,649	.49	\$23.64	3.52
Geupel DeMars Hagerman, LLC	\$637,203	\$311,652	\$325,551	7,457	.51	\$41.80	5.06
The Skillman Corporation	\$559,350	\$238,784	\$320,566	6,388	.57	\$37.38	4.44

* Construction cost estimated to be \$12,600,000

C The following noted project administration and construction management services are included in Phase II fee proposal:

Description of Service	Alliance Corporation	Construction Control, Inc.	Geupel DeMars Hagerman, LLC	The Skillman Corporation
Construction Phase:				
Securing of signed contracts	YES	YES	YES	YES
Management of all insurance documents	YES	YES	YES	YES
Conduct weekly, biweekly & monthly progress meetings	YES	YES	YES	YES
Financial Status Reports	YES	YES	YES	YES
Full-time on site staff:				
(1) Principal In Charge	NO	YES	NO	YES
(2) Project Manager	NO	YES	NO	YES
(3) Project Superintendent	NO	YES	YES	YES
(4) Others (please List)				
On Site Secretary		YES		
Administrative Assistant			YES	
Project Engineer			YES (Part time)	
Alternate Equipment/Materials Analysis	NO	YES	YES	YES
Management of multiple contractors	YES	YES	YES	YES
Inspection of all work	YES	YES	YES	YES
Approval of progress payments	YES	YES	YES	YES
Project accounting	YES	YES	YES	YES
Construction schedule adherence	YES	YES	YES	YES
Management of change orders	YES	YES	YES	YES
Punch list assistance	YES	YES	YES	YES
Management of project completeness	YES	YES	YES	YES
Quality assurance/Quality Control	YES	YES	YES	YES
Implementation of Safety Audit Program	YES	YES	YES	YES

Description of Service	Alliance Corporation	Construction Control, Inc.	Geupel DeMars Hagerman, LLC	The Skillman Corporation
Others (Please List)				
Administrative duties	YES			
Record drawings management	YES			
RFI management	YES			
Project status reports	YES			
Temporary facility planning	YES			
Construction contingency management			YES	
Administer general conditions claims analysis			YES	
Occupancy Phase:				
Start-up Procedures for Systems	YES	YES	YES	YES *
Move-in assistance	YES	YES	YES	YES
Organized maintenance manuals	YES	YES	YES	YES
Equipment information	NO	YES	YES	YES *
Building problem resolution	YES	YES	YES	YES
Overseeing of contractor retainage	YES	YES	YES	YES
Operating training	NO	YES	YES	YES *
Final project accounting	YES	YES	YES	YES
One-year warranty inspection	YES	YES	YES	YES
Expert witness	NO	NO (PAC)	NO (PAC)	NO (PAC)
Others (Please List):				
Geupel DeMars Hagerman 5-Year warranty follow-up program			YES	
FF&E Coordination	YES			

* Will organize, manage and video tape when applicable.
 (PAC) Provided At Additional Cost

Section 4 Phase I – Fees For \$21,600,000 Project Budget

A Fixed Fee – Lump Sum or Fee Based On Percent of Construction Cost

Firm Name	Fixed Fee – Lump Sum	Fee Based On Percent Of Construction Cost
Alliance Corporation	\$ 156,000.00	.72%
Construction Control, Inc	\$ 138,364.00	
Geupel DeMars Hagerman	\$112,831.00	
The Skillman Corporation	\$ 94,694.00	

B Staff Cost

Staff Position	Estimated Hours			
	Alliance Corporation	Construction Control, Inc.	Geupel DeMars Hagerman, LLC	The Skillman Corporation
Project/Account Executive	652	320	427	178
Project Superintendent	112			
On Site Construction Manager		80		20
Project Manager	672	1120	136	360
Project Secretary/Clerk	248	480		90
Estimating/Budget	120	200	400	730
Scheduling				48
Accounting				10
Budget Coordinator	40			
Project coordinator/Engineer	200		210	
Total	2,044	2,200	1,173	1,436

B Staff Cost, (Page 2)

	DPE Hourly Rate			
Staff Position	Alliance Corporation	Construction Control, Inc.	Geupel DeMars Hagerman, LLC	The Skillman Corporation
Project/Account Executive	\$75.00	\$47.67	\$74.00	\$55.83
Project Superintendent	\$40.00			
On Site Construction Manager		\$28.86		\$36.03
Project Manager	\$30.00	\$31.49	\$56.00	\$45.08
Project Secretary/Clerk	\$15.00	\$16.01		\$18.70
Estimating/Budget	\$35.00	\$27.76	\$53.00	\$34.91
Scheduling				\$34.91
Accounting				\$22.02
Budget Coordinator	\$30.00			
Project coordinator/Engineer	\$20.00		\$34.00	

	Cost (estimated hours x DPE hourly rate)			
Staff Position	Alliance Corporation	Construction Control, Inc.	Geupel DeMars Hagerman, LLC	The Skillman Corporation
Project/Account Executive	\$48,900.00	\$15,254.00	\$31,598.00	\$ 9,938.00
Project Superintendent	\$ 4,480.00			
On Site Construction Manager		\$ 2,308.00		\$ 720.00
Project Manager	\$20,160.00	\$35,268.00	\$ 7,616.00	\$16,229.00
Project Secretary/Clerk	\$ 3,720.00	\$ 7,684.00		\$ 1,683.00
Estimating/Budget	\$ 4,200.00	\$ 5,552.00	\$21,200.00	\$25,484.00
Scheduling				\$ 1,676.00
Accounting				\$ 220.00
Budget Coordinator	\$ 1,200.00			
Project coordinator/Engineer	\$ 4,000.00		\$ 7,140.00	
Total	\$86,660.00	\$66,066.00	\$67,554.00	\$55,950.00

B Staff Cost, Page 3

Fee Proposal Summary -Phase I - \$21,600,000 Project Budget

Firm	Fixed Fee Cost Lump Sum (A)	DPE Cost (B)	Admin. Cost (A-B) (C)	Estimated Hours (D)	Ratio of Admin Cost To Lump Sum Cost (C/A) (E)	DPE Average Cost Per Manhour (B/D) (F)
Alliance Corporation	\$156,000.00	\$86,660.00	\$69,340.00	2,044	.44	42.40
Construction Control, Inc.	\$138,364.00	\$66,066.00	\$72,298.00	2,200	.52	30.03
Geupel DeMars Hagerman LLC	\$112,831.00	\$67,554.00	\$45,277.00	1,173	.40	57.60
The Skillman Corporation	\$94,694.00	\$55,950.00	\$38,744.00	1,436	.41	38.96

C The following noted project administration and construction management services are included in Phase I fee proposal:

Description of Service	Alliance Corporation	Construction Control, Inc.	Geupel DeMars Hagerman, LLC	The Skillman Corporation
Planning Phase:				
Review of Educational Planning Specifications	YES	YES	YES	YES
Project Feasibility	YES	YES	YES	YES
Financial Planning	YES	YES	YES *(See note below)	YES
Cash Flow Projections	YES	YES	YES	YES
Site Selection	YES	YES	YES	YES
Contract Development	YES	YES	YES	YES
Professional Service Selection and Evaluation	YES	YES	YES	YES
Team Organization and Responsibilities List	YES	YES	YES	YES
Project Strategies	YES	YES	YES	YES
Preliminary Project Scheduling	YES	YES	YES	YES
Assist with Planning Presentations	YES	YES	YES	YES
Others (Please List):				
Construction Logistics Planning			YES	
Cost Model Development			YES	
Labor Market Survey			YES	
Quality Assurance Plan	YES			
Management Information System	YES			
Affirmative Action Plan	YES			
Review of Partnering Structure	YES			
Pre-Construction Phase:				
Review of Design Criteria with Need Assessment	YES	YES	YES	YES
Design and Systems Evaluations	YES	YES	YES	YES

Financial Planning Note: Provide cost estimate/model and general project information to assist in financial planning

Description of Service	Alliance Corporation	Construction Control, Inc.	Geupel DeMars Hagerman, LLC	The Skillman Corporation
Review of Plans for Constructability	YES	YES	YES	YES
Cost Estimates for Schematic Design, Design Development, and Working Drawings Stages	YES	YES	YES	YES
Value Engineering of Systems and Building Components	YES	YES	YES	YES
Life Cycle Cost Analysis	YES	YES	YES (AAE)	YES
Energy Studies of Equipment and Systems	YES	YES	YES	NO
Alternate System Analysis	YES	YES	YES	YES
Code Compliance Review	NO	NO (PAC)	YES (IAE)	YES
Directing of Re-Design When Required	YES	YES	YES	YES
Management of all Disciplines with Design Schedule	YES	YES	YES (IAE)	YES
Participation in all Agency and Financial Meetings	YES	YES	YES *	YES
Development of Construction Contract Language	YES	YES	YES	YES
Bid Advertising	YES	YES (costs by Owner)	YES	YES
Bidder Interest Generation	YES	YES	YES	YES
Bid Document Distribution	YES	YES	YES	YES
Pre-Bid Meetings	YES	YES	YES	YES
Bid Evaluation and Recommendations	YES	YES	YES	YES
Pre-Award Meeting	YES	YES	YES	YES
Contract Preparation	YES	YES	YES	YES
Others (Please List)				
EEO, MBE/WBE/DBE Compliance Reviews			YES	
Financial Evaluation and Recommendation	YES			
Bidding and Project Scheduling			YES	

Section 5 Phase II – Fees For \$21,600,000 Project Budget

A Fixed Fee – Lump Sum or Fee Based On Percent of Construction Cost

Firm Name	Fixed Fee – Lump Sum	Fee Based On Percent Of Construction Cost
Alliance Corporation	\$966,000.00	4.47%
Construction Control, Inc	\$523,874.00	
Geupel DeMars Hagerman	\$794,833.00	
The Skillman Corporation	\$651,106.00	

B Staff Cost

Staff Position	Estimated Hours			
	Alliance Corporation	Construction Control, Inc.	Geupel DeMars Hagerman, LLC	The Skillman Corporation
Project/Account Executive	798	200	224	240
Project Superintendent	4,524		4,066	
Assistant Superintendent	400			
On Site Construction Manager		4,500		4,225
Project Manager	3,712	1,400	1,128	1,440
On Site Secretary	4,330	4,225		
Project Secretary/Clerk		1,600	4,066	720
Estimating/Budget	480	200		144
Scheduling				96
Accounting		400		240
Budget Coordinator	350			
Project coordinator/Engineer	4,346		362	
Total	18,940	12,525	9,846	7,105

B Staff Cost, Page 2

Staff Position	DPE Hourly Rate			
	Alliance Corporation	Construction Control, Inc.	Geupel DeMars Hagerman, LLC	The Skillman Corporation
Project/Account Executive	\$75.00	\$47.67	\$78.00	\$55.83
Project Superintendent	\$40.00		\$45.00	
Assistant Suuperintendent	\$30.00			
On Site Construction Manager		\$28.86		\$36.03
Project Manager	\$30.00	\$31.49	\$59.00	\$45.08
On Site Secretary	\$15.00	\$12.14		
Project Secretary/Clerk	\$15.00	\$16.01	\$25.00	\$18.70
Estimating/Budget	\$35.00	\$27.76		\$34.91
Scheduling				\$34.91
Accounting		\$18.52		\$22.02
Budget Coordinator	\$18.00			
Project coordinator/Engineer	\$20.00		\$36.00	

Staff Position	Cost (estimated hours x DPE hourly rate)			
	Alliance Corporation	Construction Control, Inc.	Geupel DeMars Hagerman, LLC	The Skillman Corporation
Project/Account Executive	\$59,850.00	\$ 9,534.00	\$ 17,472.00	\$ 13,399.00
Project Superintendent	\$ 180,960.00		\$182,970.00	
Assistant Superintendent	\$ 12,000.00			
On Site Construction Manager		\$ 129,870.00		\$152,227.00
Project Manager	\$111,360.00	\$ 44,086.00	\$ 66,552.00	\$ 64,915.00
On Site Secretary	\$64,950	\$ 52,506.00		
Project Secretary/Clerk		\$ 25,616.00	\$ 101,650.00	\$ 13,464.00
Estimating/Budget	\$ 14,400.00	\$ 5,552.00		\$ 5,027.00
Scheduling				\$ 3,351.00
Accounting		\$7,408.00		\$ 5,285.00
Budget Coordinator	\$ 6,300.00			
Project coordinator/Engineer	\$ 86,920.00		\$ 13,032.00	
Total	\$536,740.00	\$274,572.00	\$381,676.00	\$257,668.00

B Staff Cost, Page 3

Fee Proposal Summary –Phase II - \$21,600,000 Project Budget

Firm	Fixed Fee Cost Lump Sum (A)	DPE Cost (B)	Admin. Cost (A-B) (C)	Estimated Hours (D)	Ratio of Admin Cost To Lump Sum Cost (C/A) (E)	DPE Average Cost Per Manhour (B/D) (F)
Alliance Corporation	\$966,000.00	\$536,740.00	\$429,260.00	18,940	.44	28.34
Construction Control, Inc.	\$523,874.00	\$274,572.00	\$249,302.00	12,525	.48	21.92
Geupel DeMars Hagerman LLC	\$794,833.00	\$381,676.00	\$413,157.00	9,846	.52	38.76
The Skillman Corporation	\$651,106.00	\$257,668.00	\$393,438.00	7,105	.60	36.27

Total Cost Summary

Phase I and Phase II Combined

Firm	Total fixed fee or lump sum (A)	Total DPE Cost (B)	Total administrative cost (A-B) (C)	Total Estimated hours (D)	Ratio of Admin. to lump sum cost (C/A) (E)	Total DPE Average cost Per manhour (B/D) (F)	Approximate % of total fees to construction cost (*) (G)
Alliance Corporation	\$1,122,000	\$ 623,400	\$498,600	20,984	.44	\$29.71	5.19
Construction Control, Inc.	\$ 662,238	\$ 340,638	\$321,600	14,725	.49	\$23.13	3.07
Geupel DeMars Hagerman, LLC	\$ 907,664	\$ 449,230	\$458,434	11,019	.51	\$40.77	4.20
The Skillman Corporation	\$ 745,800	\$ 313,618	\$432,182	8,541	.58	\$36.72	3.45

* Construction cost estimated to be \$21,600,000

C The following noted project administration and construction management services are included in Phase II fee proposal:

Description of Service	Alliance Corporation	Construction Control, Inc.	Geupel DeMars Hagerman, LLC	The Skillman Corporation
Construction Phase:				
Securing of signed contracts	YES	YES	YES	YES
Management of all insurance documents	YES	YES	YES	YES
Conduct weekly, biweekly & monthly progress meetings	YES	YES	YES	YES
Financial Status Reports	YES	YES	YES	YES
Full-time on site staff:				
(1) Principal In Charge	NO	YES	NO	YES
(2) Project Manager	NO	YES	NO	YES
(3) Project Superintendent	NO	YES	YES	YES
(4) Others (please List)				
On Site Secretary		YES		
Administrative Assistant			YES	
Project Engineer			YES (Part time)	
Alternate Equipment/Materials Analysis	NO	YES	YES	YES
Management of multiple contractors	YES	YES	YES	YES
Inspection of all work	YES	YES	YES	YES
Approval of progress payments	YES	YES	YES	YES
Project accounting	YES	YES	YES	YES
Construction schedule adherence	YES	YES	YES	YES
Management of change orders	YES	YES	YES	YES
Punch list assistance	YES	YES	YES	YES
Management of project completeness	YES	YES	YES	YES
Quality assurance/Quality Control	YES	YES	YES	YES
Implementation of Safety Audit Program	YES	YES	YES	YES

Description of Service	Alliance Corporation	Construction Control, Inc.	Geupel DeMars Hagerman, LLC	The Skillman Corporation
Others (Please List)				
Administrative duties	YES			
Record drawings management	YES			
RFI management	YES			
Project status reports	YES			
Temporary facility planning	YES			
Construction contingency management			YES	
Administer general conditions claims analysis			YES	
Occupancy Phase:				
Start-up Procedures for Systems	YES	YES	YES	YES *
Move-in assistance	YES	YES	YES	YES
Organized maintenance manuals	YES	YES	YES	YES
Equipment information	NO	YES	YES	YES *
Building problem resolution	YES	YES	YES	YES
Overseeing of contractor retainage	YES	YES	YES	YES
Operating training	NO	YES	YES	YES *
Final project accounting	YES	YES	YES	YES
One-year warranty inspection	YES	YES	YES	YES
Expert witness	NO	NO (PAC)	NO (PAC)	NO (PAC)
Others (Please List):				
Geupel DeMars Hagerman 5-Year warranty follow-up program			YES	
FF&E Coordination	YES			

* Will organize, manage and video tape when applicable.
(PAC) Provided At Additional Cost



REQUEST FOR STATEMENT OF QUALIFICATIONS

The University of Southern Indiana seeks a **STATEMENT OF QUALIFICATIONS** from firms interested in providing professional architectural and engineering services for the design and construction of our project titled Science/Education Classroom Building.

The Science/Education Classroom Building will:

provide general and specialized classrooms, computer, multi-media, and teaching/research laboratories for the Schools of Science and Engineering Technology, Education and Human Services, and University Division Advising and Academic Skills;

support increased student enrollment and program expansion in the Schools of Science and Engineering Technology and Education and Human Services;

facilitate cooperative efforts to prepare well-qualified science and mathematics teachers for the next century and expedite delivery of science and mathematics programming to teachers and students in the southwestern Indiana public schools;

promote collaboration on joint endeavors to incorporate modern instructional technology into the science, mathematics, and teacher education curricula and enhance development of new instructional approaches for teaching science and mathematics in grades K-12; and

increase student retention with improved academic instructional support.

The Science/Education Classroom Building will contain approximately 115,000 gross square feet of space of which 75,000 square feet will be classrooms, laboratories, offices and study facilities. The Project cost is estimated to be \$21,600,000 and completion of the building is scheduled for July 2002. The University has received approval from the State of Indiana to proceed with Phase I of the Project at an estimated cost of \$12,600,000.

Business Affairs

**Summary of
Statement of Qualifications
For Architectural and
Engineering Services**

**Science/Education
Classroom Building**

August 1999

Basic Information

Firm/Company	Telephone Number	Contact Person
Architecture Plus Corporation 7321 Eagle Crest Boulevard Evansville, IN 47715	(812) 475-1995 (812) 475-1999 Fax	Timothy A. Henning
Browning Day Mullins Dierdorf Inc. 334 North Senate Avenue Indianapolis, IN 46204	(317) 635-5030 (317) 634-5409 Fax	John M. Dierdorf
BSA Design, Inc. 9365 Counselors Row, Suite 300 Indianapolis, IN 46240	(317) 819-7878	Kevin L. Downey
Burt Hill Kosar Rittelmann Associates 400 Morgan Center Butler, PA 16001	(724) 477-1248 (724) 285-6815 Fax	P. Richard Rittelmann
Fosse & Associates Architects, Inc. and Fanning/Howey Associates, Inc. 118 East Chandler Avenue Evansville, IN 47713	(812) 424-3516 (812) 424-3517 Fax	William H. Fosse
Gibraltar Design 9102 N. Meridian Street, Suite 300 Indianapolis, IN 46260	(317) 580-5777 (317) 580-5778 Fax	Don Claffey
Hastings & Chivetta Architects, Inc. 700 Corporate Park Drive, Suite 400 St. Louis, MO 63105 <i>with</i> Edmund L. Hafer & Associates 21 Southeast Third Street, Suite 800 Evansville, IN 47708	(314) 863-5717 (812) 422-4187	Christopher Chivetta, P.E. Edmund L. Hafer, Jr. AIA
Holabird & Root LLP 300 West Adams Street Chicago, IL 60606-5174	(312) 726-5960 (312) 726-1118 Fax	James Baird
The InterDesign Group, Inc. 141 East Ohio Street Indianapolis, IN 46204	(317) 263-9655 (317) 263-9644 Fax	Andrew N. Costlow

Basic Information

The Odle McGuire & Shook Corporation P.O. Box 2149 Bloomington, IN 47402	(812) 876-2020 (812) 876-2047	Patrick Brunner
Perkins & Will 330 North Wabash Avenue Suite 3600 Chicago, IL 60611	(312) 755-0770 (312) 755-0775 Fax	Joseph Chronister
Quandt, Inc. One City Centre 120 West 7 th Street, Suite 208 Bloomington, IN 47404	(812) 333-9440	Larry W. Phelps
Schmidt Associates 320 East Vermont Street Indianapolis, IN 47204-2126	(317) 263-6226 (317) 263-6224 Fax	Wayne S. Schmidt
Steed Hammond Paul Inc. 101 West Ohio Street, 20 th Floor Indianapolis, IN 46204	(317) 684-6898 (317) 684-6899 Fax	John Padgett
Veazey Parrott & Shoulders 528 Main Street Suite 400 Evansville, IN 47708	(812) 423-7729 (812) 425-4561 Fax	Michael R. Shoulders

Team Members (Consultants & Other Firms)

Lead Firm	Consultant Firm	Services & Responsibilities Provided by Firm
Architecture Plus Corporation	• Architecture Plus Corporation	Architectural Design Interior Design
	• CUH2A	Mechanical Engineering
	• Health, Education+Research Associates, Inc.	Laboratory Design
	• Professional Consultants, Inc.	Structural, Mechanical, and Electrical Engineering
Browning Day Mullins Dierdorf Inc.	• Browning Day Mullins Dierdorf Inc.	Architectural Design
	• Charlier Clark & Linard, PC	Civil, Structural, and Site Engineering
	• Circle Design Group, Inc.	Mechanical and Electrical Engineering
	• IDO	Interior Design
	• Research Facilities Design	Laboratory Design
	• Bernadin Lochmueller & Associates, Inc.	Civil Engineering
BSA Design, Inc.	• BSA Design, Inc.	Architectural Design Structural Engineering Interior Design
	• Biagi Chance Cummins London Titzer, Inc.	Mechanical, Electrical, and Plumbing (MEP) Engineering
	• Research Facilities Design	Laboratory Design
Burt Hill Kosar Rittelmann Associates	• Burt Hill Kosar Rittelmann Associates	Mechanical and Electrical Engineering Interior Design
	• McComas Engineering, Inc	Structural Engineering
	• MMS & Associates, Inc	Construction Administration
	• Samuel L. Moore & Associates, Inc.	Site/Civil Engineering
	• Strategic Science and Technology Planners (SST)	Laboratory Design

Fosse & Associates Architects, Inc. and Fanning/Howey Associates, Inc.	• Fosse & Associates Architects, Inc.	Architectural Design Construction Administration
	• Fanning/Howey Associates, Inc.	Architectural Planning and Design
	• Wilkie Structural Engineering, Inc.	Structural Engineering
	• Biagi Chance Cummins London Titzer, Inc.	MEP Engineering
	• Research Facilities Design	Laboratory Design
Gibraltar Design	• Gibraltar Design	Architectural Design Engineering Interior Design Construction Services
Hastings & Chivetta Architects, Inc. with Edmund L. Hafer & Associates, PC	• Hastings and Chivetta Architects	Architectural Planning Interior Design
	• Edmund L. Hafer & Associates	Architectural Design Mechanical and Electrical Engineering
	• Fink Roberts & Petrie, Inc.	Structural and Civil Engineering, Surveying
	• Research Facilities Design	Laboratory Design
Holabird & Root LLP	• Holabird & Root LLP	Architectural Planning Laboratory Design Structural, Mechanical, and Electrical Engineering Interior Design Laboratory Design
The InterDesign Group, Inc.	• The InterDesign Group, Inc.	Architectural Design Electrical & Mechanical Engineering Construction Administration Interior Design Landscape Architecture Technology Development
	• McComas Engineering	Structural Engineering
	• Silver Creek Engineering	Structural Engineering
	• Earl Walls Associates	Laboratory Design

The Odle McGuire & Shook Corporation	• The Odle McGuire & Shook Corporation	Architectural Design Master/Campus Planning and Programming Interior Design
	• Biagi Chance Cummins London Titzer, Inc.	MEP Engineering, Construction
	• Michael Langthorne	Technology Planning
	• Research Facilities Design	Laboratory Design
Perkins & Will	• Perkins & Will	Architectural Design
	• Biagi Chance Cummins London Titzer, Inc.	MEP Engineering & Civil Engineering
	• Jack R. Kinkel and Son Architects	Associate Architect
	• Research Facilities Design	Laboratory Design
	• Wilkie Structural Engineer	Structural Engineering
Quandt, Inc.	• Quandt, Inc.	Architectural Design
	• Bernardin-Lochmueller & Associates, Inc.	Civil Engineering
	• Biagi Chance Cummins London Titzer, Inc.	MEP Engineering
	• Hodge Design Associates, PC	Structural Engineering
Schmidt Associates	• Schmidt Associates	Architecture Mechanical, Electrical, Civil & Plumbing Engineering Landscape Architecture Interior Design Technology Planning/Design Educational Consulting
Steed Hammond Paul Inc.	• Steed Hammond Paul Inc.	Architectural Design Interior Design
	• Biagi Chance Cummins London Titzer, Inc.	MEP Engineering
	• Lynch, Harrison & Brumleve, Inc.	Structural Engineering
	• Research Facilities Design	Laboratory Design

Veazey Parrott & Shoulders	• Veazey Parrott & Shoulders	Architectural Design Mechanical and Electrical Engineering
	• Hellmuth, Obata + Kassabaum	Architectural Design Interior Design
	• Biagi, Chance, Cummins, London, Titzer, Inc.	Civil Engineering
	• Research Facilities Design	Laboratory Design
	• Roger Winstead	Landscape Architecture
	• Wilkie Structural Engineering, Inc.	Structural Engineering

Key Personnel and Responsibilities

Firm/Company	Key Personnel	
Architecture Plus Corporation	Principal Architect: Architectural Designer: Interior Designers:	Timothy A. Henning Michael L. Ewald Susan S. Knowles Alyce P. Foster
Browning Day Mullins Dierdorf Inc.	Executive Vice President: Associate:	John M. Dierdorf John R. Lindstaedt, AIA
BSA Design, Inc.	Principal-in-Charge: Project Manager: Design Architect: Structural Engineer: Interior Design:	Kevin L. Downey, AIA Douglas W. Reddington, AIA Kalevi Huottilainen, RA Daniel B. Johnson PE Ana I. Pinto-Maregatti, IIDA
Burt Hill Kosar Rittelmann Associates	Principal-in-Charge: Project Manager: Principal-in-Charge (Engineering): Project Manager (Engineering): Landscape Architect:	P. Richard Rittelmann, FAIA Paul J. Sokolak, AIA David R. Linamen, PE Ronald C. Stobert, PE Sara W. Moore, RLA
Fosse & Associates Architects, Inc. and Fanning/Howey Associates, Inc.	Principal: Back-up Owner-in-Charge: Project Designer:	William H. Fosse, AIA Jay R. Smith, AIA William E. Payne, AIA (FH) Michael W. Smith, AIA (FH) Cheryl L. Whittenbarger, AIA (FH)
Gibraltar Design	Principal: Project Manager: Project Architect: Mechanical Engineer: Electrical Engineer: Interior Designer:	Dave Blanton, AIA Don Claffey, NCARB Todd Cass, RA Darryl Beals, PE Ralph Power, PE Jack Lasich

Key Personnel and Responsibilities

<p style="text-align: center;">Hastings & Chivetta Architects, Inc. with Edmund L. Hafer & Associates</p>	<p>Managing Principal: Principal & Project Manager: Construction Documents and Administration: Project Mechanical Engineers: Project Electrical Engineer:</p>	<p>Edmund L. Hafer, Jr., AIA Bryan L. Carr, AIA Steven R. Pugh, AIA Donald H. Austin, Jr., PE Ronald W. Steinhart, PE Matthew J. Brockman, PE</p>
<p style="text-align: center;">Holabird & Root LLP</p>	<p>Principal-in-Charge/ Project Designer: Project Manager: Project Architect: Interior Designer: Mechanical/Electrical Engineer:</p>	<p>James Baird, AIA Ernest Wagner, Jr., AIA Gisela Schmidt Maria Segal, RA Thomas Laskowski, PE</p>
<p style="text-align: center;">The InterDesign Group, Inc.</p>	<p>Project Manager: Engineer: Director of Construction Administration: Landscape Architect: Architect: Engineer:</p>	<p>Andrew N. Costlow, AIA Phillip G. Howard Arlen J. Packard William R. Moldenhauer Ted Richey Lester P. Koelling, Jr.</p>
<p style="text-align: center;">The Odle McGuire & Shook Corporation</p>	<p>Principal-in-Charge: Project Manager: Project Architect: Structural Engineer: Campus Planner/Landscape Artist: Interior Designer:</p>	<p>Patrick Brunner, AIA, REFP Lukey Illias, AIA Tim Fleck, RA Cesar Arriola, PE Ben Rawlins, ASLA Cynthia Walters-Huggins, ASID</p>
<p style="text-align: center;">Perkins & Will</p>	<p>Principal-in-Charge: Design Principal: Senior Project Architect:</p>	<p>Joseph Chronister Ralph Johnson Thomas Braham</p>
<p style="text-align: center;">Quandt, Inc.</p>	<p>Vice President: Project Architect: Job Captain: Engineering:</p>	<p>Larry W. Phelps, AIA, CSI Eric B. Ratts, AIA Scott A. Carnegie Mark T. Westphal, PE</p>

Key Personnel and Responsibilities

Schmidt Associates	Principal-in-Charge: Project Manager: Project Architect: Mechanical Engineer: Electrical Engineer: Technology Coordinator: Structural Engineering:	Wayne S. Schmidt, FAIA Troy D. Thompson Clete A. Kunce, AIA William L. Mosbaugh, PE David G. Shuck, PE Brian K. Scott Wesley B. Harrison, PE
Steed Hammond Paul Inc.	President: General Manager: Senior Vice President: Director of Construction Administration: Vice President: Schoolhouse of Quality Consultant:	Gerald S. Hammond, FAIA John Padgett, AIA Dale Heidotting, AIA Ron Hicks Cindy Kilpatrick, ASID Steve Schwandner
Veazey Parrott & Shoulders	Principal-in-Charge: Project Manager: Project Architect:	Michael R. Shoulders, AIA, AICP Michael J. Buente, AIA Sean M. Bright, AIA

Firm Experience

Classroom and Laboratory Related

Architecture Plus Corporation

Description of Projects

- Owensville Elementary School, Owensville, IN
Project Type: New Construction
Building Size: 117,800 square feet
Project Cost: \$10,078,000
Project Status: Completed 1993
- Elberfeld Elementary School
Project Type: New Construction
Building Size: 52,000 square feet
Project Cost: \$4,375,000
Project Status: Completed 1995
- Holiday Professional Building
Project Type: New Construction
Building Size: 22,000 square feet
Project Cost: \$1,300,000
Project Status: N/A

Browning Day Mullins Dierdorf Inc.

Description of Projects

- ✓ • Heine Pharmacy Building and Lab, Purdue University
Project Type: Renovation
Building Size: 120,000 square feet
Project Cost: \$1,100,000
Project Status: Completed 1997
- Health, Physical Activity and Arena Complex, Ball State University
Project Type: New Construction
Building Size: 100,000 square feet
Project Cost: \$9,500,000
Project Status: Completed 1990
- Broad Ripple High School
Project Type: Addition/Renovation
Building Size: 180,000 square feet
Project Cost: \$14,000,000
Project Status: Completed 1989
- Purdue University Technology Center
Project Type: New Construction
Building Size: 100,000 square feet
Project Cost: \$5,000,000
Project Status: Completed June 1999

BSA Design, Inc.

Description of Projects

- ✓ • Medical Science Center, Indiana University (Indianapolis)
Project Type: Addition/Renovation
Building Size: 167,000 square feet
Project Cost: \$39,000,000
Project Status: Completed May 1998
- ✓ • Chemistry Building, Indiana University (Bloomington)
Project Type: Renovation
Building Size: 171,000 square feet
Project Cost: \$18,000,000
Project Status: Completed June 1992
- ✓ • Science and Physical Plant Building, Indiana University (Kokomo)
Project Type: New Construction
Building Size: 77,000 square feet
Project Cost: \$12,900,000
Project Status: Est. Completion November 2000
- Detchon Center, Wabash College
Project Type: Addition/Renovation
Building Size: 26,000 square feet
Project Cost: \$2,600,000
Project Status: Completed October 1994

Burt Hill Kosar Rittelmann Associates

Description of Projects

- Information Technology Engineering Building, University of Virginia

Project Type: New Construction

Building Size: 90,000 square feet

Project Cost: \$18,000,000

Project Status: Est. Completion January 1, 2001

- Business & Food Marketing

- Mandeville Hall, St. Joseph's University

Project Type: New Construction

Building Size: 90,000 square feet

Project Cost: \$24,800,000

Project Status: Completed May 1, 1998

- Research Enterprise Complex, Drexel University

Concept

Project Type: New Construction

Building Size: 80,000 square feet

Project Cost: \$20,000,000

Project Status: Unknown

- Gerstacker Science Hall, Hiram College

Project Type: New Construction

Building Size: 30,000 square feet

Project Cost: \$5,500,000

Project Status: Est. Completion January 2000

Fanning/Howey Associates, Inc.

Description of Projects

- Rupp Communications Art Center, Taylor University

Project Type: Addition

Building Size: 47,850 square feet

Project Cost: \$4,257,000

Project Status: Completed 1994

- Lab School Building, Indiana State University

Project Type: Renovation

Project Cost: \$1,600,000

Project Status: Completed 1993

- Porter Hall, Purdue University Hammond

Project Type: Renovation

Building Size: 21,000 square feet

Project Cost: \$2,600,000

Project Status: Completed 1993

Gibraltar Design

Description of Projects

- Indiana Vocational Technical Institute, Indianapolis

Project Type: New Construction

Building Size: 93,000 square feet

Project Cost: \$10,000,000

Project Status: Completed 1990

- McKenzie Career Center

Project Type: New Construction

Building Size: 105,000 square feet

Project Cost: \$8,733,000

Project Status: Completed 1996

- Lawrence North High School

Project Type: New Construction

Building Size: 488,000 square feet

Project Cost: \$30,000,000

Project Status: Completed 1998

Edmund L. Hafer & Associates, P.C.

Description of Projects

- ✓ • Lower Level Health Professions Building, University of Southern Indiana

Project Type: Renovation

Building Size: 25,000 square feet

Project Cost: \$1,959,077

Project Status: Completion Pending

- ✓ • Center for Natural Sciences, Illinois Wesleyan University

Project Type: New Construction

Building Size: 132,000 square feet

Project Cost: \$20,347,017

Project Status: Completed October 1995

- Liberal Arts Classroom Building, University of Southern Indiana

Project Type: New Construction

Project Status: Completion Pending

Holabird & Root LLP

Description of Projects

- Wood-Hall, Western Michigan University
Project Type: Addition/Renovation
Building Size: 297,000 square feet
Project Cost: \$38,000,000
Project Status: Completed July 1998
- Frey Science and Engineering Center, University of St. Thomas
Project Type: New Construction
Building Size: 200,000 square feet
Project Cost: \$32,500,000
Project Status: Completed September 1997
- Noyce Science Center, Grinnell College
Project Type: Addition/Renovation
Building Size: 115,300 square feet
Project Cost: \$15,700,000
Project Status: Completed September 1997

The InterDesign Group, Inc.

Description of Projects

- ✓ • Advanced Technology Center, Indiana State University
Project Type: New Construction
Building Size: 120,000 square feet
Project Cost: \$18,500,000
Project Status: Completed January 1998
- ✓ • F.W. Olin Biological Science Building, DePauw University
Project Type: New Construction
Building Size: 41,600 square feet
Project Cost: \$6,000,000
Project Status: Completed in 1993
- Science Hall, Indiana State University
Project Type: Addition/Renovation
Building Size: 260,000 square feet
Project Cost: \$10,000,000
Project Status: Completed 1998

The Odle McGuire & Shook Corporation

Description of Projects

- Health Professions Building, University of Southern Indiana

Project Type: New Construction

Building Size: 147,300 square feet

Project Cost: \$13,069,351

Project Status: Completed 1995

- Martin Hall, University of Indianapolis

Project Type: New Construction

Building Size: 46,020 square feet

Project Cost: \$5,062,200

Project Status: Construction Phase

- Academic Building, Indiana Vocational Technical College

Project Type: New Construction

Building Size: 145,500 square feet

Project Cost: Est. \$20,832,250

Project Status: Start Date March 2000

Perkins & Will

Description of Projects

- Beeghly College of Education, Youngstown State University

Project Type: New Construction

Building Size: 77,000 square feet

Project Cost: \$12,000,000

Project Status: Completed 1998

- Dorrie and E.K. Fretwell Building, University of North Carolina at Charlotte

Project Type: New Construction

Building Size: 165,100 square feet

Project Cost: \$13,384,000

Project Status: Completed 1996

- Technology Enhanced Learning Center, State University of West Georgia

Project Type: New Construction

Building Size: 106,000 square feet

Project Cost: \$14,800,000

Project Status: Est. Completion 2001

Quandt, Inc.

Description of Projects

- Jordan Hall, Indiana University
Project Type: Renovation
Project Status: Completed 1999
- Optometry Building, Indiana University
Project Type: Renovation
Building Size: 12,000 square feet
Project Status: Completed 1999
- Ivy Tech State College, Bloomington, IN
Project Type: New Construction
Building Size: 143,500 square feet
Project Cost: \$21,000,000
Project Status: Completed 1999

Schmidt Associates

Description of Projects

- Endocrinology & Metabolism Laboratories, IUPUI
Project Type: New Construction
Building Size: 8,000 square feet
Project Cost: \$750,000
- Jordan Hall, Indiana University
Project Type: Renovation
Project Cost: \$4,000,000
Project Status: Completed 1996
- Middlefork Hall, Indiana University East
Project Type: New Construction
Building Size: 53,000 square feet
Project Cost: \$6,000,000
Project Status: Completed 1992

Steed Hammond Paul Inc.

Description of Projects

- School of Education and Allied Professions, University of Dayton
Project Type: New Construction
Building Size: 106,900 square feet
Project Cost: \$20,000,000
Project Status: Est. Completion 2003
- McGuffey Hall, Miami University
Project Type: Renovation
Building Size: 120,000 square feet
Project Cost: \$4,000,000
Project Status: Est. Completion 2002
- Stanley Hall and Dennis Hall, Earlham College
Project Type: Renovation
Project Cost: \$2,350,000

Veazey Parrott & Shoulders

Description of Projects

(all projects completed by Hellmuth, Obata, & Kassabaum (HOK))

- Anheuser Busch School of Natural Resources, University of Missouri- Columbia

Project Type: Addition

Building Size: 105,000 square feet

Project Status: Completed 1998

- Science Building, Drury University

Project Type: New Construction

Building Size: 78,000 square feet

Project Status: Completed 1998

- Science Building, Southern Illinois University at Edwardsville

Project Type: Addition/Renovation

Building Size: 245,000 square feet

Project Status: Est. Completion 2002

Ability to Perform in a Timely Manner

As recorded by firm

Architecture Plus Corporation

Browning Day Mullins Dierdorf Inc.

BSA Design, Inc.

Burt Hill Kosar Rittelmann Associates- *"Burt Hill recognizes that nowhere is the phrase 'time is money' more true than in the building construction industry. We understand that facilities must be completed on time to accommodate the efficient conduct of business, and we use effective management techniques to meet the time requirements of our projects.*

"Depending on project requirements, Burt Hill uses a combination of techniques to develop and monitor internal scheduling as well as overall project scheduling requirements. Design phase activities are typically scheduled using GANTT chart techniques and updated during regular internal scheduling review meetings."

Fosse & Associates Architects, Inc.

Gibraltar Design- *"Gibraltar Design is a large A/E firm with the ability to manage resources to meet changing requirements. While other firms may not be able to absorb rapid changes or respond to sudden needs from clients, Gibraltar Design has the capacity to perform on schedule even in demanding situations. We deliver on time, on budget, and we exceed client expectations.*

"The key professionals included in this submittal are available and have been designated for this project. Gibraltar Design has the staff and the resources to begin work on your project immediately upon award."

Edmund L. Hafer & Associates, P.C.

Holabird & Root LLP- *"Holabird & root places paramount importance on its ability to faithfully execute a design within an established budget and schedule. We understand the nature of the design/management process which maximizes the client's efficient use of funds while providing the greatest design value."*

The InterDesign Group, Inc.

The Odle McGuire & Shook Corporation

Perkins & Will

Quandt, Inc.

Schmidt Associates- *"This is always difficult to represent. If we show significant time available for your project, this could be interpreted as not busy (i.e. unsuccessful). We are busy—but busy people get things done! Currently, however, several of our larger projects are moving into the construction phase. This leaves us the available time to work with you to meet the unique needs of your university. We do have and will commit the time and energy to make the Science/Education Classroom Building a successful project!*

"Schmidt Associates' track record of a high percentage of repeat clients is a result of happy and satisfied owners. We could provide for you a lengthy listing of this information...illustrate it with graphs...and document it with charts. However, the "straight scoop" comes from those who we have served."

Steed Hammond Paul Inc.- *"...The first step we take in scheduling is to identify all the tasks required to complete the work. We then develop a project schedule based on the tasks identified and timeframes required, making sure the schedule fits into milestone dates. We review the schedule with you to make sure it meets your needs and expectations. On all our projects, we use scheduling software that provides several graphical formats detailing task timeframes and critical task information. This enables us to easily track project progress and make adjustments when necessary to complete the work on time. It also ensures that the proper people are assigned to your project when required. During construction we commit the contractor to a schedule when contracts are signed. Our on-site construction supervision visits and weekly meeting with contractors helps to keep everyone on schedule. We document throughout construction potential conflicts to the schedule and make adjustments when necessary to ensure the project is completed on time."*

Veazey Parrott & Shoulders- *"Working primarily for the public sector and even more specifically for school and university boards all across the state, scheduling and budget control is of the utmost importance. Most of our school clients represent the public sector and are spending valuable taxpayer dollars. In many cases bond issues are done years in advance of the building project, which makes it fundamental that we maintain our schedule and expenditure of these monies...*

"Planning our construction schedules with tight date deadlines is not uncommon. With the Evansville Convention Centre, a national convention has been booked for October 2, 1999. Our construction schedule continues until the end of September ...

"Keeping our clients' needs foremost in our minds, we find every way possible to ensure construction schedules are met. This level of attention to client needs explains our high percentage of work for repeat clients."

References

(for Projects of Similar Scope and Complexity)

Architecture Plus Corporation	North Gibson School Corporation	Ms. Sandra Nixon (812) 385-4851
	South Gibson School Corporation	Dr. Michael Green (812) 753-4230
	Union Planters Bank	Mr. Dan Robinson (812) 882-3050
Browning Day Mullins Dierdorf Inc.	Health, Physical Activity and Arena Complex Ball State University	Mr. Tom Morrison Associate Director of Finance (765) 285-1127
	University of Louisville	Mr. Ken Dietz Director of Planning Design & Construction (502) 852-6176
	Butler University	Mr. Michael Gardner Vice President of Operations (317) 940-9393
BSA Design, Inc.	Indiana University	Mr. J. Terry Clapacs Vice President, Administration (812) 855-6992
	Indiana University Kokomo	Mr. Raymond Bonhomme Vice Chancellor Administration & Finance (765) 455-9231
	Wabash College	Mr. Don Herring, PhD Dean (765) 361-6223
Burt Hill Kosar Rittelmann Associates	Information Technology Engineering Building University of Virginia	Ms. Juanita Purvis (804) 982-5943
	Mandeville Hall St. Joseph's University	Mr. Kevin Robinson (610) 660-1357
	Gerstacker Science Hall Hiram College	Mr. Richard W. Powers (330) 569-5129

Fanning/Howey Associates, Inc.	Taylor University	Dr. Daryl R. Yost Provost/Executive Vice President (219) 456-2111
	Indiana State University	Mr. Kevin L. Runion Associate Vice President/Facility Management (812) 237-8100
	Purdue University	Mr. Gene Hatke Senior Architect (765) 464-3416
Gibraltar Design	Ivy Tech State College Indianapolis, IN	Dr. Peter T. Magnant Division Chairman, Health & Human Services (317) 921-4430
	McKenzie Career Center	No Reference Listed
	Lawrence North High School Indianapolis, IN	Dr. Edward Williams Asst. Superintendent for Planning & Operations (317) 546-4921
Edmund L. Hafer & Associates, P.C.	Illinois Wesleyan University	Mr. Ken Browning Vice President for Business & Finance
	Southwest Missouri State University	Mr. Douglas Sampson Supervisor of Design and Construction (417) 836-5101
	Hanover College	Mr. Terry Phillips Vice President for Administration (812) 866-7045
Holabird & Root LLP	Frey Science and Engineering Center University of St. Thomas	Dr. David Boyd Department of Chemistry (612) 962-5577
	Noyce Science Center Grinnell College	Dr. James Swartz Dean of Academic Affairs (515) 269-3006
	Wood Hall Addition and Retrofit Western Michigan University	Dr. David Dakins University Architect (616) 387-8543

The InterDesign Group, Inc.	Advanced Technology Center Indiana State University	Dr. Clois Kicklighter Dean, School of Technology (812) 237-8100
	F.W. Olin Biological Science Building DePauw University	James E. Daugherty Director of Physical Plant (317) 658-4236
	Science Hall Indiana State University	Kevin Runion Assistant Vice President, University Facility Manager (812) 237-8175
The Odle McGuire & Shook Corporation	Martin and Lilly Halls University of Indianapolis	Kendall L. Hottell Business Manager (317) 788-3214
	University of Indianapolis	Dr. Jerry Israel President (317) 788-3211
	Academic Building Indiana Vocational Technical College	Thomas Jordan Former Dean (812) 332-4115
Perkins & Will	Beeghly College of Education Youngstown State University	Mike Skurich Staff Architect (330) 742-1471
	Dorrie and E.K. Fretwell Building University of North Carolina at Charlotte	Olen B. Smith Vice Chancellor for Business Affairs (704) 547-2234
	Technology Enhanced Learning Center State University of West Georgia	Beheruz Sethna President (770) 836-7442
Quandt, Inc.	Indiana University	Patrick Luzadder Senior Associate University Architect (812) 855-1268
	Southwestern Consolidated School District of Shelby County	Robert Molnar Superintendent (317) 729-5746
	Flat Rock-Hawcreek School Corporation	Dr. Kevin Caress Superintendent (812) 546-4922

Schmidt Associates	Endocrinology & Metabolism Laboratories IUPUI	Tom Hanna School of Medicine (317) 274-4581
	Middlefork Hall Indiana University East <i>and</i> Jordan Hall Indiana University	Terry Clapacs Vice President for Administration (812) 855-6992 <i>or</i> Robert Meadows Assistant VP/University Architect (812) 855-3525
Steed Hammond Paul Inc.	School of Education and Allied Professions University of Dayton	Dr. Thomas Lasley Dean (937) 229-3557
	McGuffey Hall Miami University	Mr. Bob Keller, AIA University Architect (513) 529-2359
	Stanley Hall and Dennis Hall Earlham College	Richard K. Smith Vice President for Financial Affairs (765) 983-1468
Veazey Parrott & Shoulders	Evansville-Vanderburgh School Corporation	Dr. Phillip W. Schoffstall Superintendent (812) 435-8477
	Evansville-Vanderburgh County Building Authority	Mr. Steve Utley
	Ivy State College	Mr. Dan Schenk Chancellor (812) 429-1389

Handout for
Finance Committee
9/09/99

**UNIVERSITY OF SOUTHERN INDIANA
Bank Accounts - Demand Deposit
As of June 30, 1999**

<u>INSTITUTION</u>	<u>PURPOSE</u>	<u>ACCOUNT #</u>	<u>BOOK BALANCE</u>
Civitas	Operating	0412600083	(\$36,786.00) [A]
National City Bank	Bookstore Deposits	67838130	\$116,942.71
Old National Bank	Student Loan Electronic Deposits	413003094	\$32,828.61
Old National Bank	Student Loan Electronic Deposits	413007332	\$32,529.16
Old National Bank	Flexible Spending	413001806	\$27,925.64
Old National Bank	Payroll Disbursement	404016227	\$9,791.04
Old National Bank	Lock Box	401076431	\$83,268.67
Spencer County Bank	Young Abe Lincoln Deposits	115718101	\$17,359.07

[A] End of month sweep repurchase agreement of \$1,354,375.85 booked as of June 30.

Handout -
Finance Committee
9/09/99.



VARIABLE RATE DEMAND BOND
SERIES 1999

SUN

The &
projec
secure
providi

**Review of Financing Alternatives
for the
Wellness, Fitness, Recreational Facility**

FIXED RATE

Advantages

- Provides the security of a constant interest rate for the life of the bonds

Disadvantages

- Borrower loses the flexibility of principal prepayment
- Ten-year call provision could prohibit the issuer from prepaying the debt for the first ten years
- Prepayment penalty may negate the savings generated from early payment

VARIABLE RATE

Advantages

- Borrower can retain flexibility with respect to principal payments
- Borrower can prepay bonds with no penalty
- Interest rates average 200 basis points lower for a variable rate versus a fixed rate

Disadvantages

- Interest rate risk

Variable Rate Models

Letter of Credit

- Traditional form of credit enhancement for a variable rate issue
- Must be renegotiated every five years
- Future merger may impact on the enhancement bank's rating

Bond Insurance

- Common rate enhancement tool for fixed rate issues
- Can be used with a bank line of credit to enhance a variable rate issue
- Carries a long-term AAA rating
- Line of credit is usually less expensive than a letter of credit
- Insurer may require specific bond covenants
- Insurer may require a pledged-fees test and a mortgage on the property

SUMMARY

The Board of Trustees previously authorized the issuance of variable rate bonds for this project. The University's plan is to pursue the variable rate issue with level debt service secured with a line of credit, thus allowing the University to retain payment flexibility and providing the potential of interest savings.

**UNIVERSITY OF SOUTHERN INDIANA
Variable Rate Demand Bonds Series 1999**

Maturity Date: August 1, 2019 (20-year maturity)

Pricing Date: September 21, 1999

Settlement Date: September 22, 1999

Par Amount: \$4,700,000

Project Amount: \$4,200,000

Capitalized Interest: Through August 2001

Amortization: Beginning 2003

2003-08	\$200,000 per year
2009-17	\$300,000 per year
2018-19	\$400,000 per year

Enhancement: The bonds will be enhanced by a letter of credit from Bank One, IN N.A. (@.325%)

Ratings: Both Moody's and S&P will rate the bonds

Purpose: The Bond proceeds will be issued to finance and reimburse the University for costs incurred constructing and equipping a Wellness, Fitness, Recreational Facility on the USI campus.

Interest Modes: Weekly Rate, Adjustable Rate or Fixed Rate

Initial Mode: Weekly or Adjustable Rate

Public Finance: Banc One Capital Markets, Inc.

UNIVERSITY OF SOUTHERN INDIANA
Variable Rate Demand Bonds Series 1999

SOURCES OF FUNDS

Bond Proceeds	\$4,700,000
---------------	--------------------

USES OF FUNDS

Project Expenses	\$4,200,000
------------------	--------------------

Capitalized Interest (Through 8/01)	287,312
-------------------------------------	----------------

Letter of Credit Fees	28,380
-----------------------	---------------

Cost of Issuance	113,000
------------------	----------------

Underwriters Discount	50,000
-----------------------	---------------

Other	<u>21,308</u>
-------	----------------------

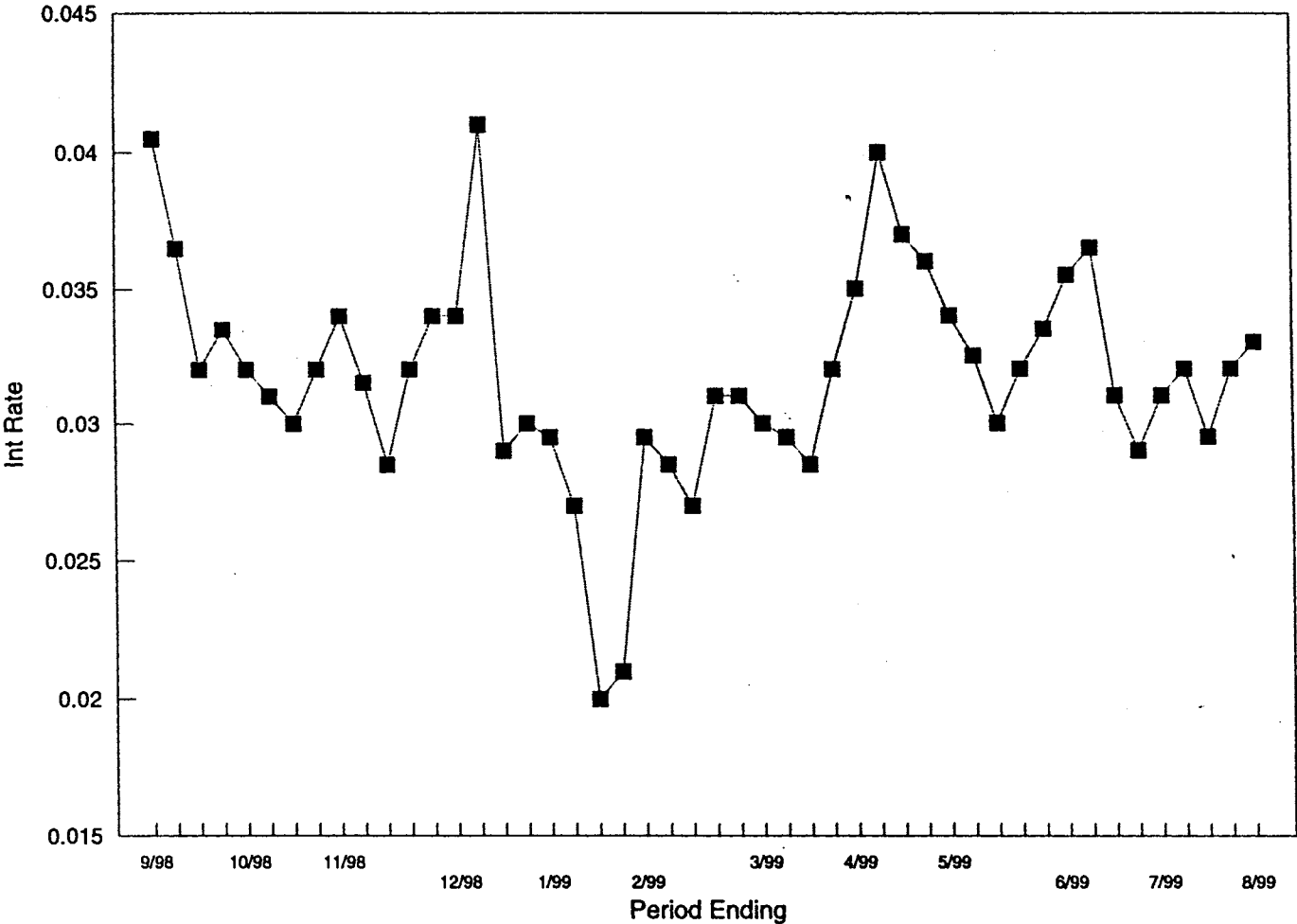
TOTAL USES	<u>\$4,700,000</u>
-------------------	---------------------------

UNIVERSITY OF SOUTHERN INDIANA
USI Student Fee bonds, Series G
Projected Spending Requirement

Amount of Bond Proceeds		\$4,700,000
Spending Targets	%	(1)
March 22, 2000	10.00%	\$470,000
September 22, 2000	45.00%	\$2,115,000
March 22, 2001	75.00%	\$3,525,000
September 22, 2001	100.00%	\$4,700,000

(1) Spending must equal percentage of bond proceeds plus interest revenue.

**UNIVERSITY OF SOUTHERN INDIANA
Variable Rate Student Housing Bonds
Interest History**



Cumulative Average Interest Rate

3.178%